



**FU YANG**



**Rotary Unions**

*For coolant, water, oil, and air, vacuum service*

**富陽機械有限公司**

**FU YANG MACHINERY CO.,LTD.**

# Contents

Type	Media				Max. Pressure		Max. Temperature		Speed (RPM)	Page
	Coolant	Oil	Air	Vacuum	BAR	PSI	°C	°F		
<i>RF / RFB</i>	○	○	○	○	70	1,000	120	250	10,000	3
<i>RBI</i>	○	○	○	○	70	1,000	120	250	3,500	5
<i>RLB / RLF</i>	○	○	✗	✗	70	1,000	120	250	15,000	7
<i>RSB / RSF</i>	○	○	✗	✗	105	1,500	120	250	15,000	9
<i>RMB / RMF</i>	○	○	✗	✗	105	1,500	120	250	15,000	11
<i>RHB / RHF</i>	○	○	✗	✗	105	1,500	120	250	20,000	13
<i>RMB / RMF-0911</i>	○	○	✗	✗	105	1,500	120	250	20,000	15
<i>R- SINGLE</i>	○	○	○	○	25	360	180	360	3,000	23
<i>R- DOUBLE</i>	○	○	△	△	25	360	180	360	3,000	24
<i>RH</i>	○	○	✗	✗	140	2,000	120	250	12,000	27
<i>RB</i>	△	○	✗	✗	300	4,300	120	250	350	28
<i>RP</i>	○	○	✗	✗	70	1,000	100	215	1,500	29
<i>RBH</i>	△	○	✗	✗	210	3,000	100	215	1,500	30
<i>RHL</i>	△	○	△	△	300	4,300	100	215	450	31
<i>RS</i>	△	○	△	✗	210	3,100	120	250	450	32
<i>RT</i>	△	○	△	✗	300	4,300	120	250	650	33
<i>RMH-HP</i>	△	○	△	✗	200	2,900	60	140	3,000	34
<i>RMH-H2A1</i>	△	○	△	✗	200	2,900	60	140	3,000	35
<i>R108F</i>	△	○	○	△	70	1,000	120	250	5,000	36
<i>RM-HP</i>	△	○	△	△	300	4,300	100	215	450	37
<i>RMH-H2A2</i>	△	○	△	✗	200	2,900	60	140	1,500	38
<i>A17</i>	○	○	✗	✗	175	2,500	70	160	40,000	39
<i>A21</i>	○	○	✗	✗	140	2,000	70	160	40,000	40
<i>A29</i>	○	○	✗	✗	140	2,000	70	160	30,000	41
<i>A39 / A54</i>	○	○	△	✗	140	2,000	70	160	30,000	42



Recommended



Acceptable



Not Recommended

1. 在操作旋轉接頭的同時請勿把壓力、轉速、使用溫度超出最大上限值。
2. 如有技術上疑問，請諮詢當地的銷售商。

1. Do not operate unions at a combination maximum values of pressure, temperature, and speed.
2. If you have technical questions, please inquire the local vendors.



# Company Profile

**富陽機械有限公司**專業生產各類型旋轉接頭以符合機械工業界不同的需求，秉持！誠信負責、品質至上、以客為尊、永續經營”的理念，以多角化經營不斷開發一系列新式的旋轉接頭及開拓新的市場，使產品多元化，對顧客的產能提昇，降低企業生產成本，提高產品的附加價值均具有正面意義。

由於現代科技日新月異及分秒必爭的趨勢下，”**FU YANG**“ 多年來不斷的創新技術積極開發，生產一系列旋轉接頭規格精準、品質優越、目前現有的產品性能，以及提供合理的價位合乎業者的需求，減低生產業者產品設備的成本，並能提高工作效率。

展望未來，產業競爭激烈、技術革新月異，今後”**FU YANG**“ 努力的方向將投入更多的人力物力在研究部門外，以期待開發更好性能的旋轉接頭高科技產品，進而提昇業者對”**FU YANG**“ 產品的信心，而最終的目的就是為了客戶在旋轉接頭上的需求，也期望能在各機械產業上發展繼續略盡棉薄之力。

**FU YANG MACHINERY CO.,LTD.** specializes in producing all kinds of rotary unions to meet the different demands in the industry. Taking honesty and responsibility, quality, respect for the customers, and permanent management as the management concept, the company continually develops a series of new rotary unions and markets with multi-angle management and ceaselessly innovates and develops, which makes the products multi-variation. And it is positive to promote the production capacity, to reduce the production cost and to increase the added value of the products.

With fast changing modern technology and under the trends that every second must account, the”**FU YANG**“ has ceaselessly innovated the technology and actively developed and produced a series of rotary unions with precise specification, first grade quality and the performance of the existing products and provides reasonable price which can meet the demand of the field, reduce the product equipment cost of the manufacturers and improve the work efficiency.

Looking forward to the future, the competition is fierce and the technology reform is changing with each passing day. The next target of the”**FU YANG**“ is to plunge more manpower and material resource into the research and development department to develop rotary unions with better performance and more products and equipment of further heighten the clients' confidence to the products and meet your demand for the rotary unions and we also look forward to making a humble contribution to the development of the field.

## FU YANG

# RF

空氣 - 水 - 真空  
冷卻工具  
液壓油



## RF Series Rotary Unions

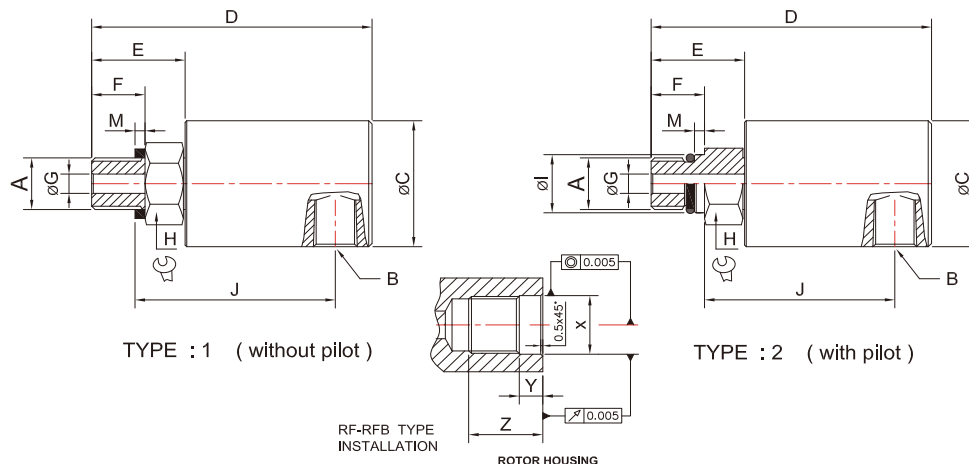
- Full-media flow design.
- Self-supported rotating union.
- Radial and axial housing connection.
- Balanced mechanical seals made from tungsten carbide.
- Low torque.
- Aluminum Alloy housing.
- Stainless steel rotor.
- If you have technical questions, please inquire the local vendors.
- 多款流體設計。
- 可自身支撐旋轉接頭。
- 外殼可徑向和軸向雙向連接。
- 平衡式精密機械密封件採用碳化鎢硬質合金。
- 鋁合金外殼。
- 不鏽鋼轉軸。
- 扭矩係數低。
- 如有技術上疑問，請洽當地有關銷售商。

## Operating Date

**Air-Water-Vacuum**  
**Coolant Media-**  
**Hydraulic**

Fluid	Max. Pressure	Max. Temperature	Max. Speed	Run Dry
Air / Vacuum <b>AC</b>	10 BAR / 760 mmHg	120 °C	Type: 1,3 1,500 rpm/min <sup>-1</sup> Type: 2,4 10,000 rpm/min <sup>-1</sup>	YES
Water / Oil <b>T</b>	70 Bar	120 °C	Type: 1,3 1,500 rpm/min <sup>-1</sup> Type: 2,4 8,000 rpm/min <sup>-1</sup>	NO

## RF Radial Connection

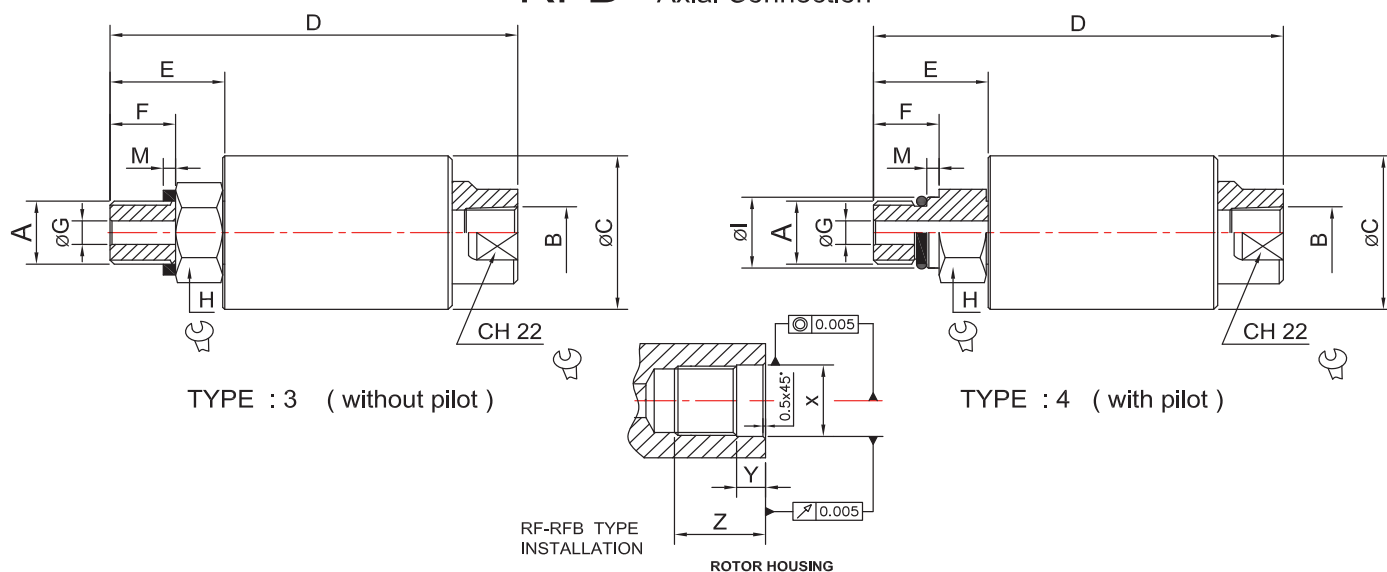


Type	Ordering No:	A	B	øC	D	E	F	øG	H	J	M	Kg
1	RF018G018R01N1	G 1/8"	RC 1/8"	39	79	23	12	4.5	22	58.5	2	0.24
1	RF018R018R01N1	RC 1/8"	RC 1/8"	39	79	23	12	4.5	22	56.5	2	0.24
1	RF08G014R01N2	G 1/4"	RC 1/4"	39	82	26	15	6	22	58.5	2	0.24
1	RF08R014R01N2	RC 1/4"	RC 1/4"	39	82	26	15	6	22	56.5	2	0.24
1	RF28G038R01N3	G 3/8"	RC 3/8"	44	100	26	16	8.5	22	72.5	2	0.37
1	RF28R038R01N3	RC 3/8"	RC 3/8"	44	100	26	16	8.5	22	70.5	2	0.37
1	RF08U05L01N2	5/8"-18UNF LH	RC 1/4"	39	84	28	16	6	22	59.5	2	0.26
1	RF08M16L(R) 01N2	M16xP1.5 LH	RC 1/4"	39	84	28	16	6	22	59.5	2	0.26
1	RF28U05L02N3	5/8"-18UNF LH	RC 3/8"	44	100	26	16	8.5	22	72.5	2	0.37
1	RF28M16L(R) 02N3	M16xP1.5 LH	RC 3/8"	44	100	26	16	8.5	22	72.5	2	0.37

FU YANG



# RFB Axial Connection



Type	Ordering No:	A	B	øC	D	E	F	øG	H	J	øI	M	X	Y	Z	Kg
2	RF08U05LP01N2	5/8"-18UNF LH	RC 1/4"	39	88	32	20	6	22	57.5	16.650/16.638	3	16.652/16.660	7	24	0.26
2	RF08M16LP01N2	M16xP1.5 LH	RC 1/4"	39	84	28	16	6	22	57.5	17.995/17.985	3	17.997/18.005	7	21	0.26
2	RF08U05RP01N2	5/8"-18UNF RH	RC 1/4"	39	88	32	20	6	22	57.5	16.650/16.638	3	16.652/16.660	7	24	0.26
2	RF08M16RP01N2	M16xP1.5 RH	RC 1/4"	39	84	28	16	6	22	57.5	17.995/17.985	3	17.997/18.005	7	21	0.26
2	RF28U05LP02N3	5/8"-18UNF LH	RC 3/8"	44	104	30	20	8.5	22	70.5	16.650/16.638	3	16.652/16.660	7	24	0.37
2	RF28M16LP02N3	M16xP1.5 LH	RC 3/8"	44	100	26	16	8.5	22	70.5	17.995/17.985	3	17.997/18.005	7	21	0.37
2	RF28U05RP02N3	5/8"-18UNF RH	RC 3/8"	44	104	30	20	8.5	22	70.5	16.650/16.638	3	16.652/16.660	7	24	0.37
2	RF28M16RP02N3	M16xP1.5 RH	RC 3/8"	44	100	26	16	8.5	22	70.5	17.995/17.985	3	17.997/18.005	7	21	0.37
3	RFB018G018R01N1	G 1/8"	RC 1/8"	39	95	23	12	4.5	22	—	—	2	—	—	—	0.24
3	RFB018R018R01N1	RC 1/8"	RC 1/8"	39	95	23	12	4.5	22	—	—	2	—	—	—	0.24
3	RFB08G014R01N2	G 1/4"	RC 1/4"	39	98	26	15	6	22	—	—	2	—	—	—	0.27
3	RFB08R014R01N2	RC 1/4"	RC 1/4"	39	98	26	15	6	22	—	—	2	—	—	—	0.27
3	RFB28G038R01N3	G 3/8"	RC 3/8"	44	121.5	26	16	8.5	22	—	—	2	—	—	—	0.38
3	RFB28R038R01N3	RC 3/8"	RC 3/8"	44	121.5	26	16	8.5	22	—	—	2	—	—	—	0.38
3	RFB08U05L01N2	5/8"-18UNF LH	RC 1/4"	39	100	28	16	6	22	—	—	2	—	—	—	0.28
3	RFB08M16L(R) 01N2	M16xP1.5 LH	RC 1/4"	39	100	28	16	6	22	—	—	2	—	—	—	0.28
3	RFB28U05L02N3	5/8"-18UNF LH	RC 3/8"	44	121.5	26	16	8.5	22	—	—	2	—	—	—	0.38
3	RFB28M16L(R) 02N3	M16xP1.5 LH	RC 3/8"	44	121.5	26	16	8.5	22	—	—	2	—	—	—	0.38
4	RFB08U05LP01N2	5/8"-18UNF LH	RC 1/4"	39	104	32	20	6	22	—	16.650/16.638	3	16.652/16.660	7	24	0.28
4	RFB08M16LP01N2	M16xP1.5 LH	RC 1/4"	39	100	28	16	6	22	—	17.995/17.985	3	17.997/18.005	7	21	0.28
4	RFB08U05RP01N2	5/8"-18UNF RH	RC 1/4"	39	104	32	20	6	22	—	16.650/16.638	3	16.652/16.660	7	24	0.29
4	RFB08M16RP01N2	M16xP1.5 RH	RC 1/4"	39	100	28	16	6	22	—	17.995/17.985	3	17.997/18.005	7	21	0.29
4	RFB28U05LP02N3	5/8"-18UNF LH	RC 3/8"	44	125.5	30	20	8.5	22	—	16.650/16.638	3	16.652/16.660	7	24	0.38
4	RFB28M16LP02N3	M16xP1.5 LH	RC 3/8"	44	121.5	26	16	8.5	22	—	17.995/17.985	3	17.997/18.005	7	21	0.38
4	RFB28U05RP02N3	5/8"-18UNF RH	RC 3/8"	44	125.5	30	20	8.5	22	—	16.650/16.638	3	16.652/16.660	7	24	0.38
4	RFB28M16RP02N3	M16xP1.5 RH	RC 3/8"	44	121.5	26	16	8.5	22	—	17.995/17.985	3	17.997/18.005	7	21	0.38

空氣 - 水 - 真空  
液壓油  
埋入裝置



## RBI Series Rotary Unions

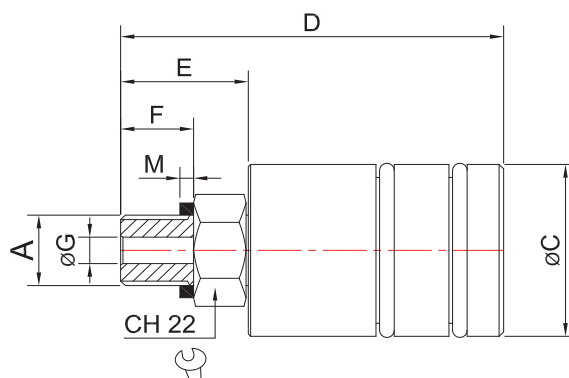
- Design the rotary joint products for special applications.
- Special seals are made of tungsten carbide and graphite carbon, anti - wear and dry - type rotary.
- After long time practical test and practical application, the sealing surface balance is the best.
- Compact design users can be installed.
- 這些旋轉接頭產品是為了特殊應用設計。
- 特殊的密封件是碳化鎢和石墨碳精所製成的，抗磨損和可乾式運轉。
- 經長時間實際測試及實際運用所獲得的密封面平衡效果最好。
- 緊湊設計用戶可自行安裝。

### Operating Date

Air-Water-Vacuum  
Oil  
Inside mounting

Fluid	Max. Pressure	Max. Temperature	Max. Speed	Run Dry
Air / Vacuum <b>AC</b>	10 BAR / 760 mmHg	120 °C	Type: 1 1,500 rpm/min <sup>-1</sup> Type: 2 3,000 rpm/min <sup>-1</sup>	YES
Water / Oil <b>T</b>	70 Bar	120 °C	Type: 1 1,500 rpm/min <sup>-1</sup> Type: 2 3,500 rpm/min <sup>-1</sup>	NO

## RBI -Type 1

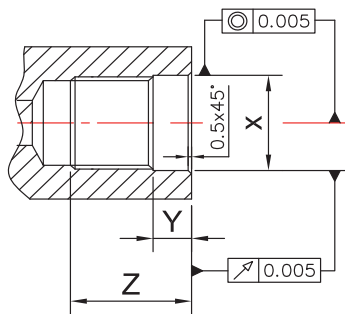


TYPE : 1 ( without pilot )

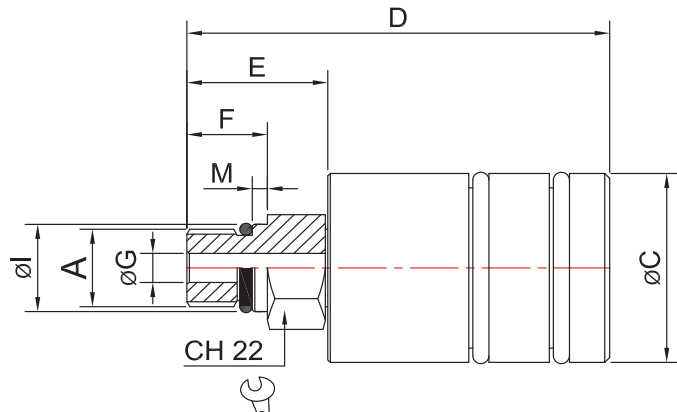
Type	Ordering No:	A	øC	D	E	F	øG	M	T	L	øP +0.3 +0.4	Kg
1	RBI-018G018R01	G 1/8"	39	79	23	12	4.5	2	25	54	39	0.24
1	RBI-018R018R01	RC 1/8"	39	79	23	12	4.5	2	25	54	39	0.24
1	RBI-08G014R01	G 1/4"	39	82	26	15	6	2	28	54	39	0.25
1	RBI-08R014R01	RC 1/4"	39	82	26	15	6	2	28	54	39	0.25
1	RBI-28G038R01	G 3/8"	44	100	26	16	8.5	2	28	72	44	0.37
1	RBI-28R038R01	RC 3/8"	44	100	26	16	8.5	2	28	72	44	0.37
1	RBI-08U05L01	5/8"-18UNF LH	39	84	28	16	6	2	30	54	39	0.26
1	RBI-08M16L01	M16xP1.5 LH	39	84	28	16	6	2	30	54	39	0.26
1	RBI-28U05L02	5/8"-18UNF LH	44	100	26	16	8.5	2	28	72	44	0.37
1	RBI-28M16L02	M16xP1.5 LH	44	100	26	16	8.5	2	28	72	44	0.37

# RBI -Type 2

RF-RFB TYPE  
INSTALLATION



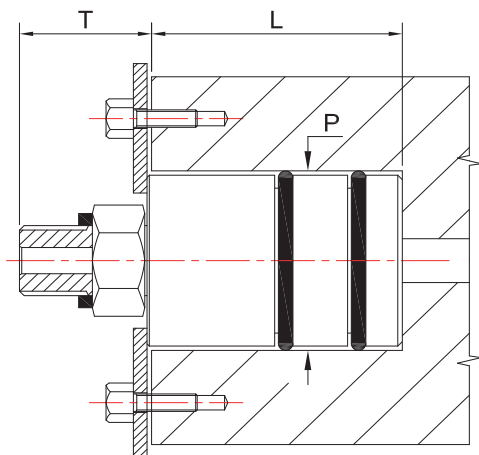
ROTOR HOUSING



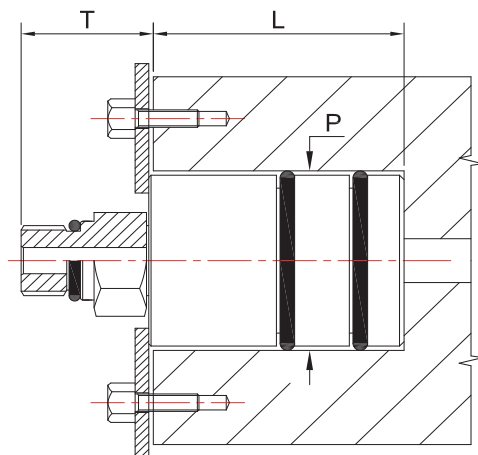
TYPE : 2 ( with pilot )

Type	Ordering No:	A	øC	D	E	F	øG	øI	M	T	L	øP +0.3 +0.4	X	Y	Z	Kg
2	RBI-08U05LP01	5/8"-18UNF LH	39	88	32	20	6	16.650/16.638	3	34	54	39	16.652/16.660	7	24	0.26
2	RBI-08M16LP01	M16xP1.5 LH	39	84	28	16	6	17.995/17.985	3	30	54	39	17.997/18.005	7	21	0.26
2	RBI-08U05RP01	5/8"-18UNF RH	39	88	32	20	6	16.650/16.638	3	34	54	39	16.652/16.660	7	24	0.26
2	RBI-08M16RP01	M16xP1.5 RH	39	84	28	16	6	17.995/17.985	3	30	54	39	17.997/18.005	7	21	0.26
2	RBI-28U05LP02	5/8"-18UNF LH	44	104	30	20	8.5	16.650/16.638	3	32	72	44	16.652/16.660	7	24	0.38
2	RBI-28M16LP02	M16xP1.5 LH	44	100	26	16	8.5	17.995/17.985	3	28	72	44	17.997/18.005	7	21	0.38
2	RBI-28U05RP02	5/8"-18UNF RH	44	104	30	20	8.5	16.650/16.638	3	32	72	44	16.652/16.660	7	24	0.38
2	RBI-28M16RP02	M16xP1.5 RH	44	100	26	16	8.5	17.995/17.985	3	28	72	44	17.997/18.005	7	21	0.38

## RBI Type In-The-Shaft Mounted Unions



TYPE : 1 ( without pilot )



TYPE : 2 ( with pilot )

## RBI-TYPE INSTALLATION



水  
冷卻工具  
液壓油  
高轉速

Water  
Media- Hydraulic  
Hydraulic  
High-Speed



1. 液體在高速條件下運轉運用是非常特殊且困難的。
2. 在旋轉接頭產品配件中有一個迷宮式組件來防止洩漏。
3. 兩個密封面的材質是由特殊碳化鎢所製成的，在長期旋轉下抗磨損。
4. 密封環在一般旋轉下得到適當的平衡補償，在高壓下也可以得到及小的磨損。
5. 轉軸材質為不鏽鋼材質，外殼為鋁合金材質。

應用範圍：

一般工具機、鑽孔機、電腦數值機械、玻璃鑽孔機、專業機器....等

1. It is very special and difficult to use the cooling liquid transfer in high-speed rotation.
2. In the rotary joint product accessories have a labyrinth components to prevent leakage.
3. The two seal face material is made of special tungsten carbide, resistance to abrasion under rotation for a long time.
4. Sealing ring properly balance compensation under general rotation, can also get under high pressure and little wear and tear.
5. Shaft is made of stainless steel; the shell is aluminum alloy material.

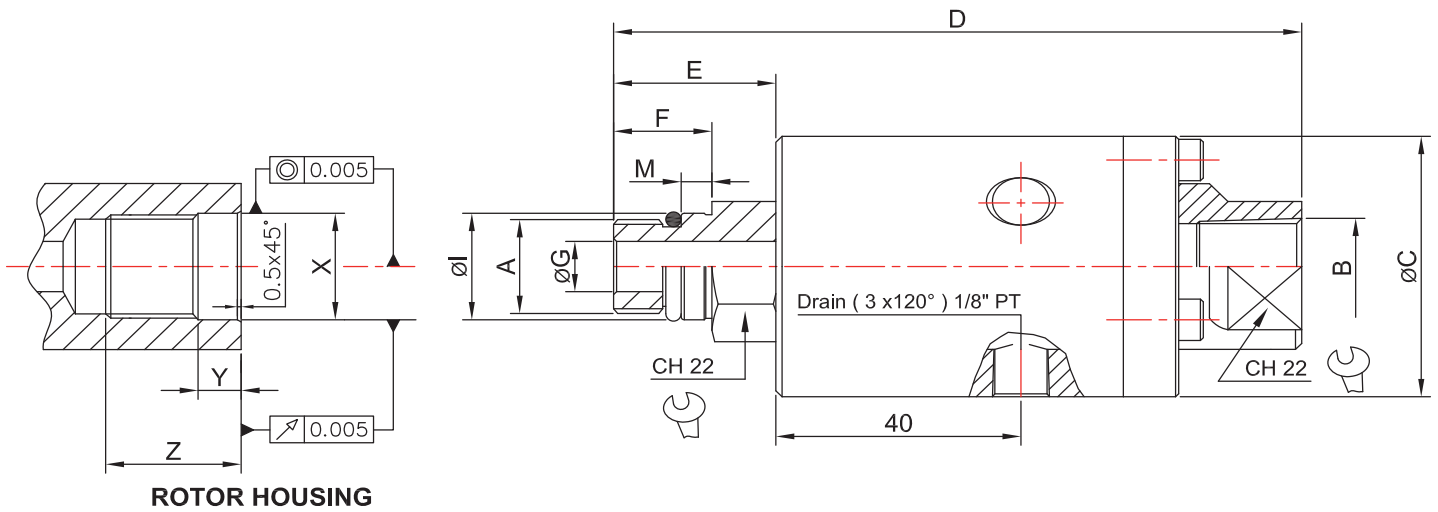
Application:

General tool machine, drilling machine, computer numerical machinery, glass drilling machine, machine... Etc.

### Operating Date

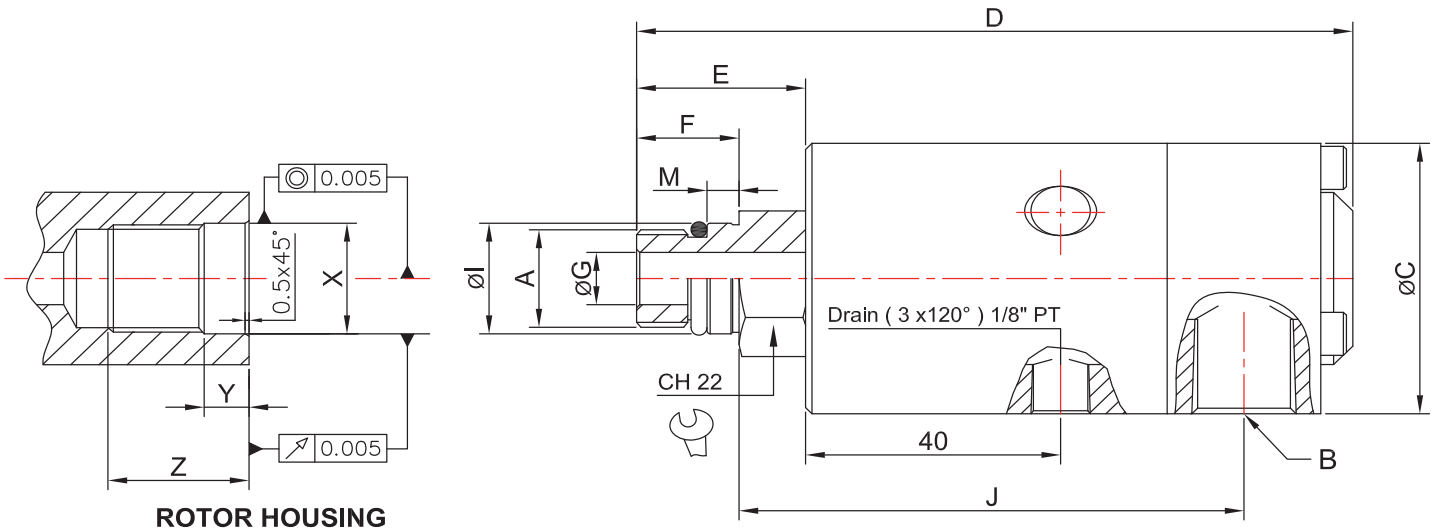
Type	Fluid	Max. Pressure	Max. Temperature	Max. Speed!	Run Dry
RLB / RLF-08	Water / Oil	70 Bar	120 °C	15,000 rpm/min <sup>-1</sup>	NO
RLB / RLF-28		70 Bar	120 °C	15,000 rpm/min <sup>-1</sup>	NO

# RLB Axial Connection



Ordering No:	A	B	øC	D	E	F	øG	øI	M	J	X	Y	Z	Kg
RLB08U05L01N2	5/8"-18UNF LH	1/4" RC	44	115	29.5	19	8.5	16.650/16.640	5	—	16.652/16.660	9	24	0.41
RLB28U05L02N3	5/8"-18UNF LH	3/8" RC	44	115	29.5	19	8.5	17.995/17.985	5	—	17.997/18.005	9	21	0.41
RLB08M16L03N2	M16xP1.5 LH	1/4" RC	44	112	26.5	16	8.5	16.650/16.640	5	—	16.652/16.660	9	24	0.41
RLB28M16L04N3	M16xP1.5 LH	3/8" RC	44	112	26.5	16	8.5	17.995/17.985	5	—	17.997/18.005	9	21	0.41

# RLF Radial Connection



Ordering No:	A	B	øC	D	E	F	øG	øI	M	J	X	Y	Z	Kg
RLF08U05L05N2	5/8"-18UNF LH	1/4" RC	44	115	29.5	19	8.5	16.650/16.640	5	79	16.652/16.660	9	24	0.44
RLF28U05L06N3	5/8"-18UNF LH	3/8" RC	44	115	29.5	19	8.5	17.995/17.985	5	79	17.997/18.005	9	21	0.44
RLF08M16L07N2	M16xP1.5 LH	1/4" RC	44	112	26.5	16	8.5	16.650/16.640	5	79	16.652/16.660	9	24	0.45
RLF28M16L08N3	M16xP1.5 LH	3/8" RC	44	112	26.5	16	8.5	17.995/17.985	5	79	17.997/18.005	9	21	0.45

冷卻 - 水 - 油  
高轉速  
混濁液體

Coolant-Water  
High-Speed  
Dirty Liquids!



1. 高品質旋轉接頭有不鏽鋼轉軸組合在精密軸承上，確保長時間運轉高性能無震動。
2. 常閉型的雙密封環是碳化鎢材質所製成的，而且這種材質是抗磨損極好。
3. 旋轉心軸為不鏽鋼材質，外殼為鋁合金採陽極處理。
4. 產品中採用不鏽鋼彈簧，不生鏽也不受到干擾，流體介質通路流暢。
5. RSB 型和 RSF 型冷卻液接管連接方向是不同。

應用範圍：

一般工具機、鑽孔機、電腦數值機械、玻璃鑽孔機、專業機器....等

1. High quality rotary joints with the combination of stainless steel shaft on the precision bearing ensure the long time running high performance without trembling.
2. Normally closed type of double sealing ring is made of tungsten carbide material, and the material is excellent wear resistance.
3. Rotating mandrel for the stainless steel material, shell for anodizing aluminum alloy.
4. Products using stainless steel spring no rust no disturbance of the fluid medium access fluent.
5. RSB type and RSF type cooling fluid over connection direction is different.

Application:

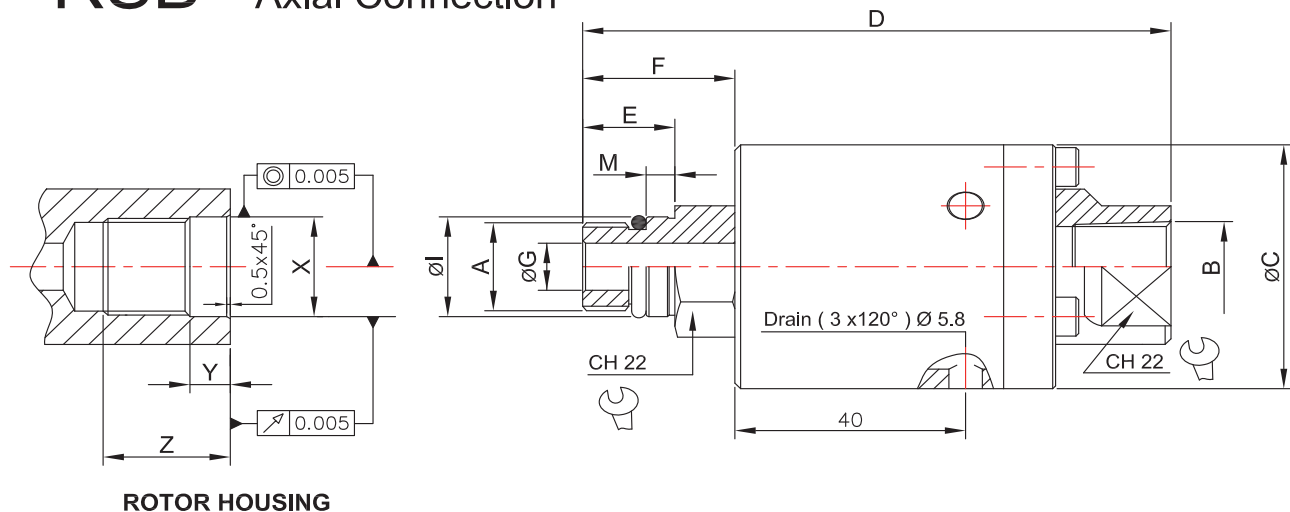
General tool machine, drilling machine, computer numerical machinery, glass drilling machine, machine... Etc.

### Operating Date

Type	Fluid	Max. Pressure	Max. Temperature	Max. Speed!	Run Dry
RSB / RSF-08	Water / Oil	100 Bar	120°C	15,000 rpm/min <sup>-1</sup>	NO
RSB / RSF-28		100 Bar	120 °C	15,000 rpm/min <sup>-1</sup>	NO

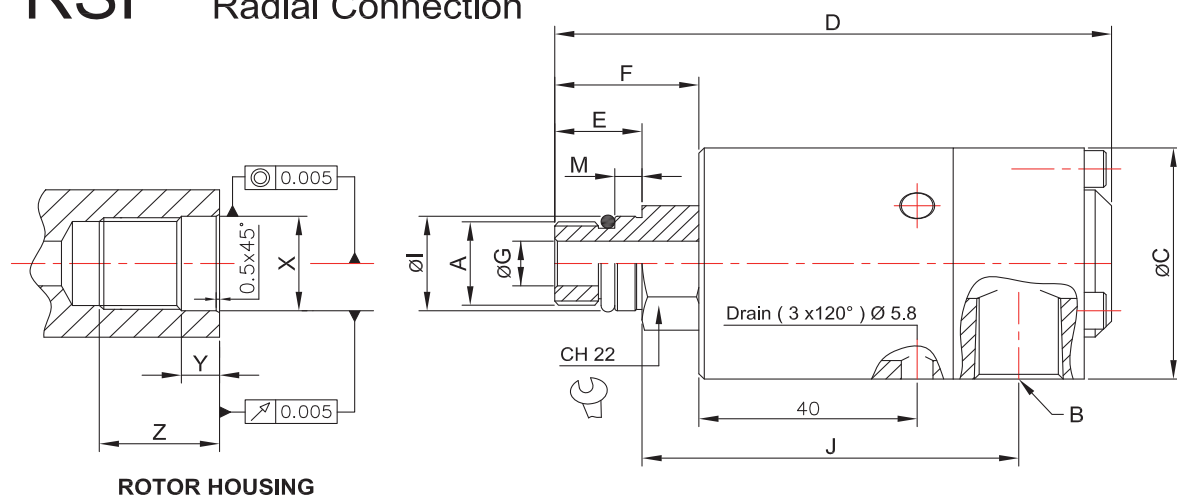


# RSB Axial Connection



Ordering No:	A	B	øC	D	E	F	øG	øI	M	J	X	Y	Z	Kg
RSB08U05R01N2	5/8"-18UNF RH	1/4" RC	44	105	29.5	19	8.5	16.650/16.640	5	—	16.652/16.660	9	24	0.33
RSB08U05L01N2	5/8"-18UNF LH	1/4" RC	44	105	29.5	19	8.5	16.650/16.640	5	—	16.652/16.660	9	24	0.33
RSB28U05R02N3	5/8"-18UNF RH	3/8" RC	44	105	29.5	19	8.5	16.650/16.640	5	—	16.652/16.660	9	24	0.33
RSB28U05L02N3	5/8"-18UNF LH	3/8" RC	44	105	29.5	19	8.5	16.650/16.640	5	—	16.652/16.660	9	24	0.33
RSB08M16L03N2	M16xP1.5 LH	1/4" RC	44	102	26.5	16	8.5	17.995/17.985	5	—	17.997/18.005	9	21	0.33
RSB28M16L04N3	M16xP1.5 LH	3/8" RC	44	102	26.5	16	8.5	17.995/17.985	5	—	17.997/18.005	9	21	0.33

# RSF Radial Connection



Ordering No:	A	B	øC	D	E	F	øG	øI	M	J	X	Y	Z	Kg
RSF08U05R01N2	5/8"-18UNF RH	1/4" RC	44	105	29.5	19	8.5	16.650/16.640	5	69	16.652/16.660	9	24	0.36
RSF08U05L01N2	5/8"-18UNF LH	1/4" RC	44	105	29.5	19	8.5	16.650/16.640	5	69	16.652/16.660	9	24	0.36
RSF28U05R02N3	5/8"-18UNF RH	3/8" RC	44	105	29.5	19	8.5	16.650/16.640	5	69	16.652/16.660	9	24	0.36
RSF28U05L02N3	5/8"-18UNF LH	3/8" RC	44	105	29.5	19	8.5	16.650/16.640	5	69	16.652/16.660	9	24	0.36
RSF08M16L03N2	M16xP1.5 LH	1/4" RC	44	102	26.5	16	8.5	17.995/17.985	5	69	17.997/18.005	9	21	0.36
RSF28M16L04N3	M16xP1.5 LH	3/8" RC	44	102	26.5	16	8.5	17.995/17.985	5	69	17.997/18.005	9	21	0.36

冷卻 - 油  
開 / 閉 功能  
高轉速

Coolant-Oil  
ON / OFF  
High-Speed



1. 高精密度的旋轉接頭要有自動開 / 閉功能特色。
2. 開 / 閉功能當冷卻液穿過瞬間接合的這段期間避免洩漏。
3. 當冷卻液停止穿越時，密封環馬上打開避免摩擦，防止乾磨造成損壞。
4. RMB 型和 RMF 型旋轉接頭冷卻液接管連接方向是不同。
5. 特殊的迷宮式組件是來防止少量液體回漏。
6. 採用不鏽鋼彈簧不生鏽不阻礙機械、不受任何外來的改變。

1. High precision rotary joints have automatic ON / OFF function.
2. ON / OFF function when coolant through the instantaneous joint during this period to avoid leakage.
3. When coolant stops across, sealing ring opened immediately to avoid friction and prevent damage of dry grinding.
4. RMB and RMF rotary joints coolant fluid over connection direction is different.
5. Special labyrinth component is to prevent a small amount of liquid leakage.
6. Stainless steel spring does not rust don't hinder the machinery, not subject to any external changes.

應用範圍：

一般工具機、鑽孔機、電腦數值機械、玻璃鑽孔機、專業機器....等

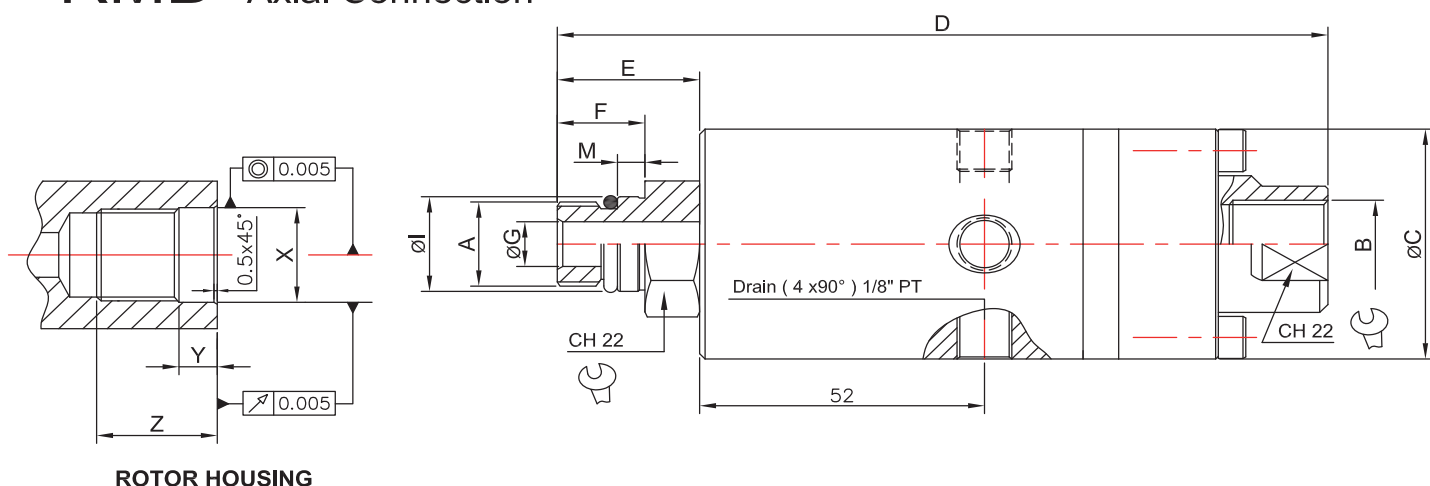
Application:

General tool machine, drilling machine, computer numerical machinery, glass drilling machine, machine... Etc.

### Operating Date

Type	Fluid	Max. Pressure	Max. Temperature	Max. Speed!	Run Dry
RMB / RMF-08	Water / Oil	105 Bar	120°C	15,000 rpm/min <sup>-1</sup>	YES
RMB / RMF-28		70 Bar	120 °C	15,000 rpm/min <sup>-1</sup>	YES

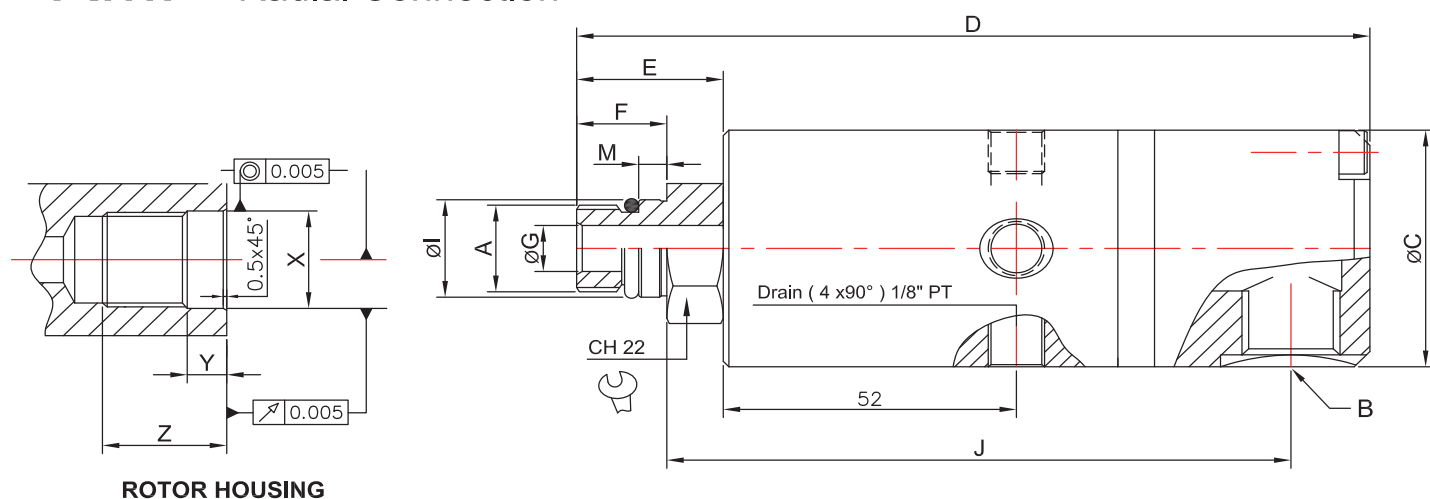
# RMB Axial Connection



ROTOR HOUSING

Ordering No:	A	B	øC	D	E	F	øG	øI	M	J	X	Y	Z	Kg
RMB28U05L01N3	5/8"-18UNF LH	3/8" RC	43.76	115	29	19	8.5	16.650/16.640	5	—	16.652/16.660	9	24	0.49
RMB28M16L02R3	M16xP1.5 LH	G 3/8"	43.76	112	26	16	8.5	17.995/17.985	5	—	17.997/18.005	9	21	0.49
RMB08U05L03N2	5/8"-18UNF LH	1/4" RC	43.76	115	29	19	8.5	16.650/16.640	5	—	16.652/16.660	9	24	0.5
RMB08M16L04R2	M16xP1.5 LH	G 1/4"	43.76	112	26	16	8.5	17.995/17.985	5	—	17.997/18.005	9	21	0.5

# RMF Radial Connection



ROTOR HOUSING

Ordering No:	A	B	øC	D	E	F	øG	øI	M	J	X	Y	Z	Kg
RMF28U05L05N3	5/8"-18UNF LH	3/8" RC	43.76	115	29	19	8.5	16.650/16.640	5	111	16.652/16.660	9	24	0.54
RMF28M16L06R3	M16xP1.5 LH	G 3/8"	43.76	112	26	16	8.5	17.995/17.985	5	111	17.997/18.005	9	21	0.54
RMF08U05L07N2	5/8"-18UNF LH	1/4" RC	43.76	115	29	19	8.5	16.650/16.640	5	111	16.652/16.660	9	24	0.54
RMF08M16L08R2	M16xP1.5 LH	G 1/4"	43.76	112	26	16	8.5	17.995/17.985	5	111	17.997/18.005	9	21	0.54



冷卻 - 油  
開 / 閉 功能  
高轉速

Coolant-Oil  
ON / OFF  
Very High-Speed



1. 高精密度的旋轉接頭要有自動開 / 閉功能特色。
2. 開 / 閉功能當冷卻液穿過瞬間接合的這段期間避免洩漏。
3. 當冷卻液停止穿越時，密封環馬上打開避免摩擦，防止乾磨造成損壞。
4. RHB 型和 RHF 型旋轉接頭冷卻液接管連接方向是不同。
5. 此類的旋轉接頭 RHB/RHF 和 RMB/RMF 不同於殼體表面有凹槽，在高速旋轉時幫助散熱。
6. 特殊的迷宮式組件是來防止少量液體回漏。
7. 採用不鏽鋼彈簧不生鏽不阻礙機械、不受任何外來的改變。

應用範圍：

一般工具機、鑽孔機、電腦數值機械、玻璃鑽孔機、專業機器....等

1. High precision rotary joints have automatic ON / OFF function.
2. ON / OFF function when coolant through the instantaneous joint during this period to avoid leakage.
3. When coolant stops across, sealing ring opened immediately to avoid friction and prevent damage of dry grinding.
4. RHB and RHF rotary joints coolant fluid over connection direction is different.
5. This type of rotary joints RHB/RHF and RMB/RMF have grooved is different from the shell surface, when rotating at high speed to help heat dissipation.
6. Special labyrinth component is to prevent a small amount of liquid leakage.
7. Stainless steel spring does not rust don't hinder the machinery, not subject to any external changes.

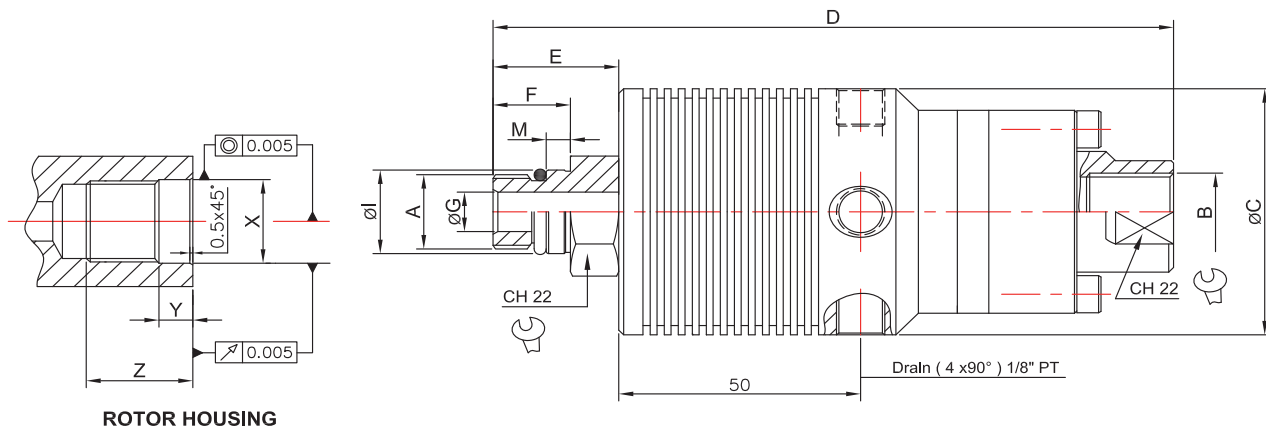
Application:

General tool machine, drilling machine, computer numerical machinery, glass drilling machine, machine... Etc.

## Operating Date

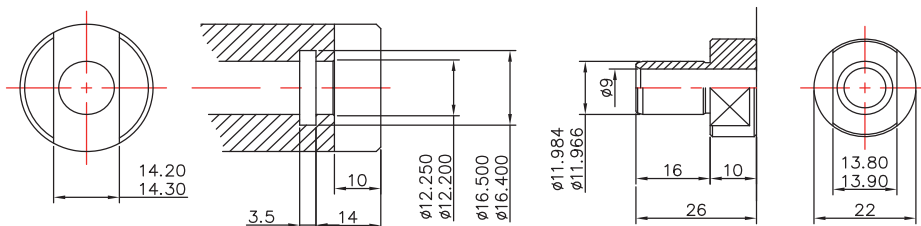
Type	Fluid	Max. Pressure	Max. Temperature	Max. Speed!	Run Dry
RHB / RHF-08	Water / Oil	105 Bar	120°C	20,000 rpm/min <sup>-1</sup>	YES
RHB / RHF-28		70 Bar	120 °C	15,000 rpm/min <sup>-1</sup>	YES

## RHB Axial Connection



Ordering No:	A	B	øC	D	E	F	øG	øI	M	J	X	Y	Z	Kg
RHB08U05L01N2	5/8"-18UNF LH	1/4" RC	53	144	29	19	8.5	16.650/16.640	5	—	16.652/16.660	9	24	0.58
RHB08M16L02R2	M16xP1.5 LH	G 1/4"	53	141	26	16	8.5	17.995/17.985	5	—	17.997/18.005	9	21	0.58
RHB28U05L03N3	5/8"-18UNF LH	3/8" RC	53	144	29	19	8.5	16.650/16.640	5	—	16.652/16.660	9	24	0.58
RHB28M16L04R3	M16xP1.5 LH	G 3/8"	53	141	26	16	8.5	17.995/17.985	5	—	17.997/18.005	9	21	0.58

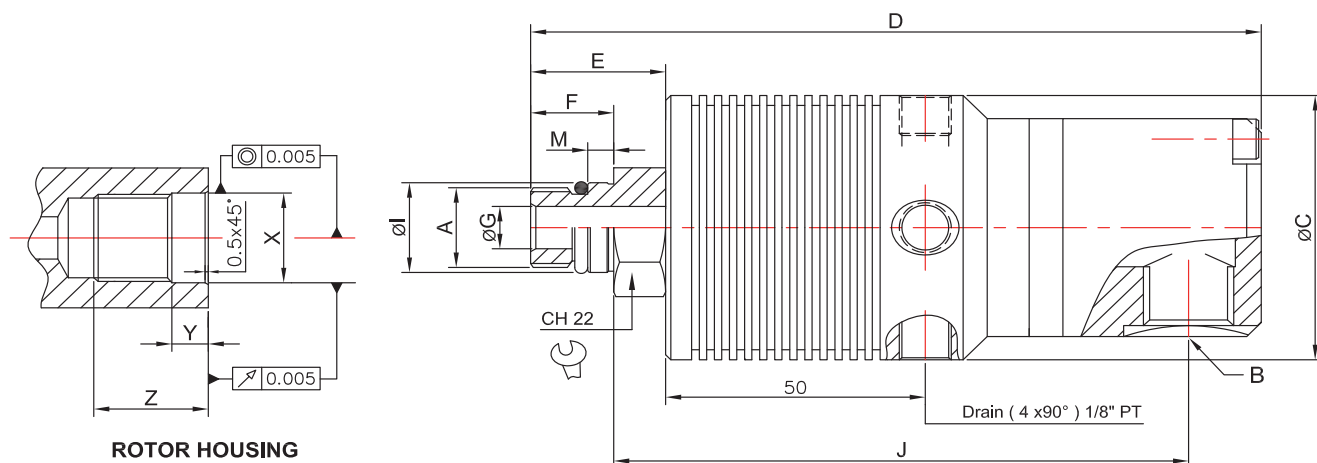
SH  
ROTOR TYPE



## DIMENSION HOUSING

## DIMENSION ROTOR

## RHF Radial Connection



Ordering No:	A	B	øC	D	E	F	øG	øI	M	J	X	Y	Z	Kg
RHF08U05L05N2	5/8"-18UNF LH	1/4" RC	53	144	29	19	8.5	16.650/16.640	5	111	16.652/16.660	9	24	0.63
RHF08M16L06R2	M16xP1.5 LH	G 1/4"	53	141	26	16	8.5	17.995/17.985	5	111	17.997/18.005	9	21	0.63
RHF28U05L07N3	5/8"-18UNF LH	3/8" RC	53	144	29	19	8.5	16.650/16.640	5	111	16.652/16.660	9	24	0.63
RHF28M16L08R3	M16xP1.5 LH	G 3/8"	53	141	26	16	8.5	17.995/17.985	5	111	17.997/18.005	9	21	0.63

冷卻 - 油  
開 / 閉 功能  
高轉速

Coolant-Oil  
ON / OFF  
High-Speed



1. 高精密度的旋轉接頭要有自動開 / 閉功能特色。
2. 開 / 閉功能當冷卻液穿過瞬間接合的這段期間避免洩漏。
3. 當冷卻液停止穿越時，密封環馬上打開避免摩擦，防止乾磨造成損壞。
4. 兩個密封面的材質是由特殊碳化鎢所製成的，在長期旋轉下抗磨損。
5. 特殊的迷宮式組件是來防止少量液體回漏。
6. 轉軸材質為不鏽鋼材質，外殼為鋁合金材質。

1. High precision rotary joints have automatic ON / OFF function.
2. ON / OFF function when coolant through the instantaneous joint during this period to avoid leakage.
3. When coolant stops across, sealing ring opened immediately to avoid friction and prevent damage of dry grinding.
4. The two seal face material is made of special tungsten carbide, resistance to abrasion under rotation for a long time.
5. Special labyrinth component is to prevent a small amount of liquid leakage.
6. Shaft is made of stainless steel; the shell is aluminum alloy material.

#### 應用範圍：

一般工具機、鑽孔機、電腦數值機械、玻璃鑽孔機、專業機器....等。

#### Application:

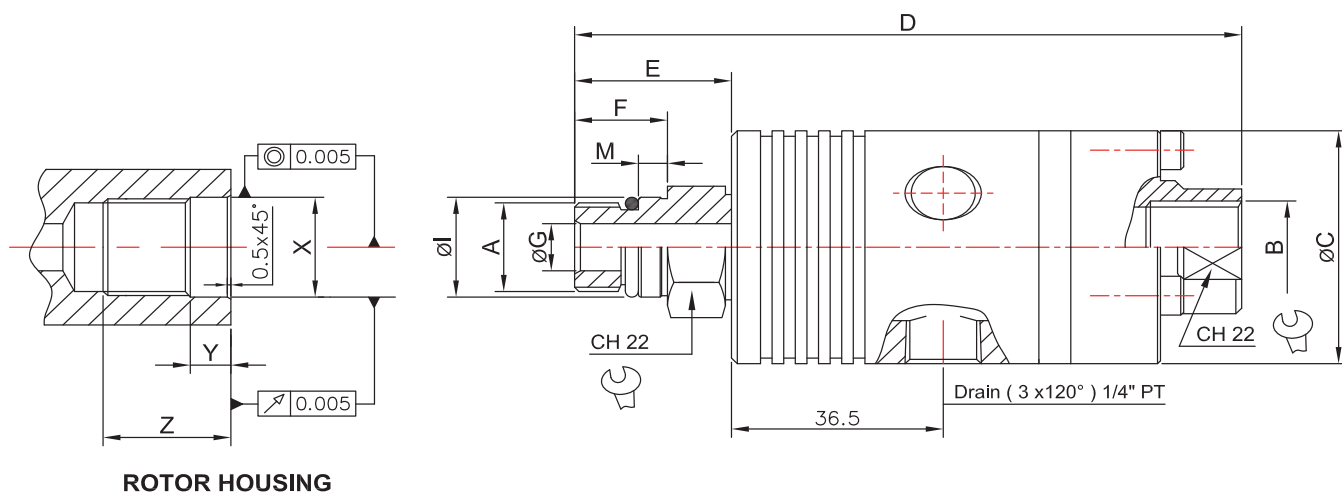
General tool machine, drilling machine, computer numerical machinery, glass drilling machine, machine... Etc.

#### Operating Date

Type	Fluid	Max. Pressure	Max. Temperature	Max. Speed!	Run Dry
RMB / RMF-0911-N2	Water / Oil	105 Bar	120°C	20,000 rpm/min <sup>-1</sup>	YES
RMB / RMF-0911-N3		70 Bar	120 °C	15,000 rpm/min <sup>-1</sup>	YES

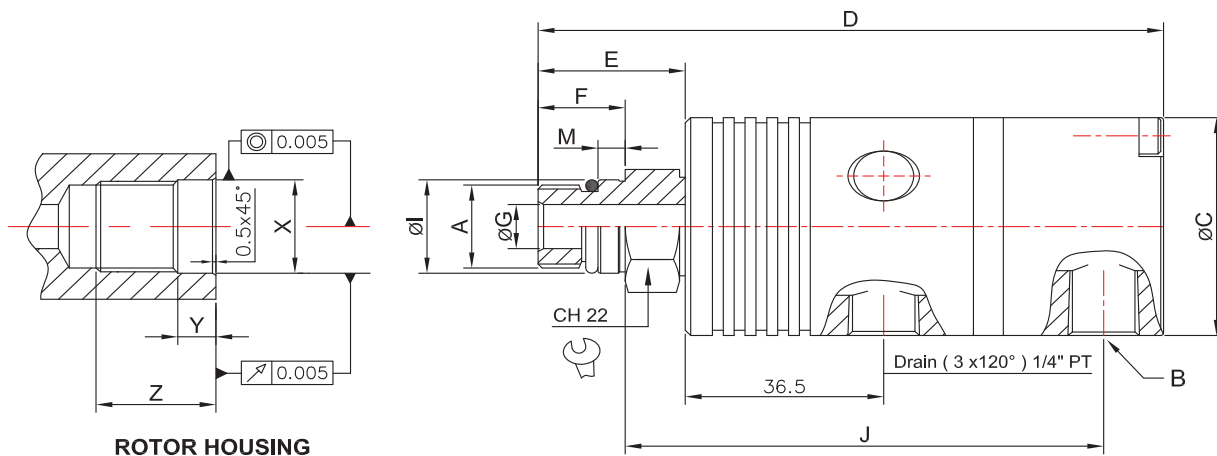


## RMB-0911 Axial Connection



Ordering No:	A	B	øC	D	E	F	øG	øI	M	J	X	Y	Z	Kg
RMB-0911M10R014N2	M10xP1.0 RH	1/4" RC	42	113	25	14	5	10.995/10.897	5	—	10.997/11.005	9	21	0.38
RMB-0911M12L014N2	M12xP1.25 LH	1/4" RC	42	117.5	27.5	18.5	5	14.000/13.992	5	—	14.002/14.010	9	24	0.38
RMB-0911U05L014N2	5/8"-18UNF RH	1/4" RC	42	118	30	19	8.5	16.650/16.640	5	—	16.652/16.660	9	24	0.39
RMB-0911U05L038N3	5/8"-18UNF LH	3/8" RC	42	118	30	19	8.5	16.650/16.640	5	—	16.652/16.660	9	24	0.39
RMB-0911M16L014N2	M16xP1.5 LH	1/4" RC	42	115	27	16	8.5	17.995/17.985	5	—	17.997/18.005	9	21	0.39
RMB-0911M16L038N3	M16xP1.5 LH	3/8" RC	42	115	27	16	8.5	17.995/17.985	5	—	17.997/18.005	9	21	0.39

## RMF-0911 Radial Connection



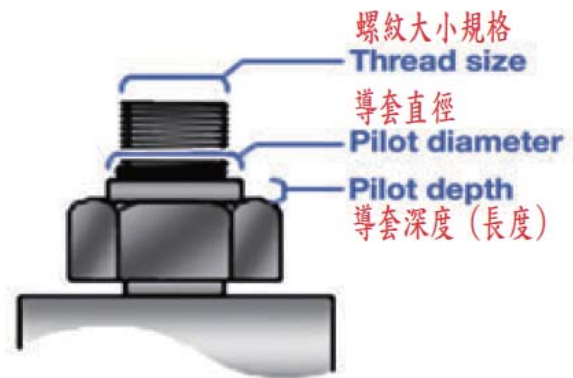
Ordering No:	A	B	øC	D	E	F	øG	øI	M	J	X	Y	Z	Kg
RMF-0911M10R014N2	M10xP1.0 RH	1/4" RC	42	113	25	14	5	10.995/10.897	5	88	10.997/11.005	9	21	0.41
RMF-0911M12L014N2	M12xP1.25 LH	1/4" RC	42	117.5	27.5	18.5	5	14.000/13.992	5	88	14.002/14.010	9	24	0.41
RMF-0911U05L014N2	5/8"-18UNF RH	1/4" RC	42	118	30	19	8.5	16.650/16.640	5	88	16.652/16.660	9	24	0.42
RMF-0911U05L038N3	5/8"-18UNF LH	3/8" RC	42	118	30	19	8.5	16.650/16.640	5	88	16.652/16.660	9	24	0.42
RMF-0911M16L014N2	M16xP1.5 LH	1/4" RC	42	115	27	16	8.5	17.995/17.985	5	88	17.997/18.005	9	21	0.42
RMF-0911M16L038N3	M16xP1.5 LH	3/8" RC	42	115	27	16	8.5	17.995/17.985	5	88	17.997/18.005	9	21	0.42

## 旋轉接頭（常閉型）安裝注意事項 1

### SELF-SUPPORTED COOLANT UNIONS

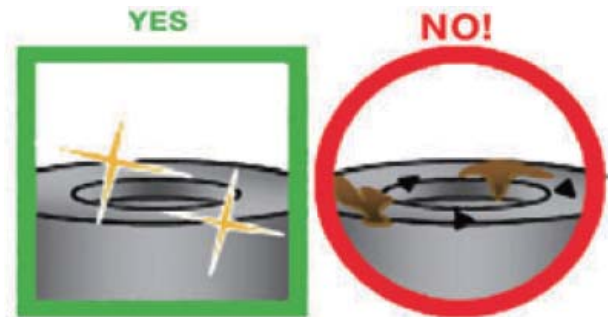
- A. Make sure this union will fit. Compare this union to the old union to match pilot diameter, pilot depth, thread size, thread direction (left-hand or right-hand) and thread type.

請確認這個接頭與原本接頭是否相符，導套的直徑和深度，螺紋的大小及螺紋連接方向（左旋或是右旋）螺紋規格。



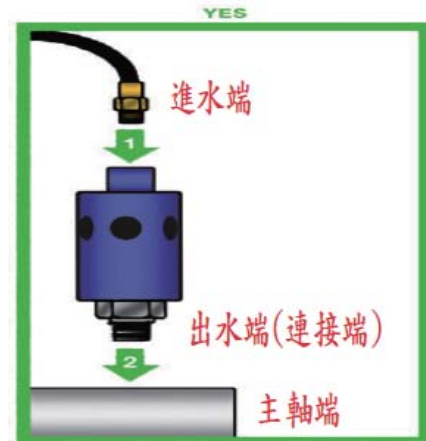
- B. Clean the mounting surfaces. The spindle must be clean, with no chips, no burrs, and no dents. Otherwise, the union will vibrate.

主軸安裝的端面，必須要乾淨清潔無毛邊或灰塵和凸起，這些都會引起旋轉接頭偏擺和震動的發生。



- C. Connect hose first. Coolant supply hose must be connected BEFORE mounting the union on the spindle. Otherwise, union may be damaged.

首先要連接軟管時，進油管必須要裝在主軸時之前完成。否則，安裝順序不當容易造成旋轉接頭的損壞。



## WARNING !

Do not disassemble or replace parts or sealing material **FU YANG** rotary joint. Easily affect the rotary joint damage caused by the loss of the machine.

If you have technical problems or installing optional, please consult the relevant technical departments **FU YANG** companies.

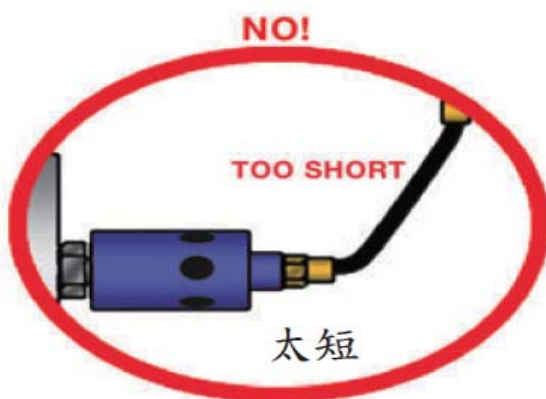
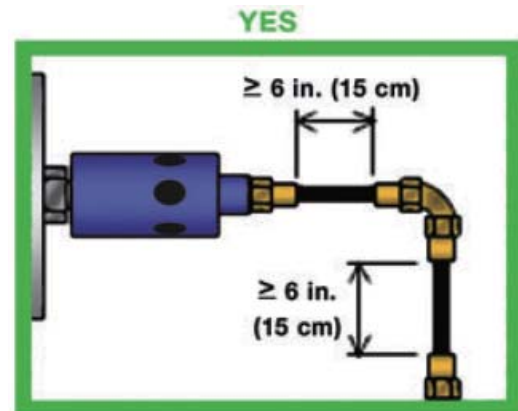
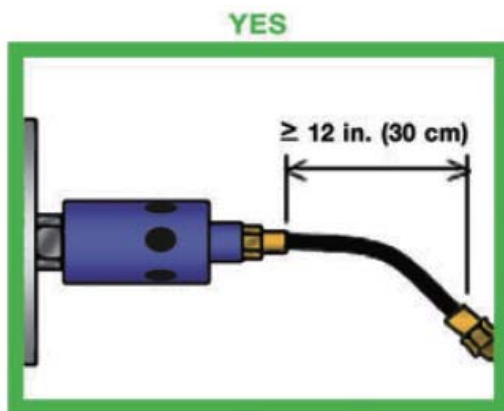
請勿自行拆解或更換 **FU YANG** 旋轉接頭原有組件或密封材料，容易影響旋轉接頭毀損造成機器上的損失，如果有技術或安裝選購的問題，請向有關 **FU YANG** 公司相關技術部門諮詢。

## 旋轉接頭（常閉型）安裝注意事項 2

### SELF-SUPPORTED COOLANT UNIONS

- D. Make sure hoses are not too tight or too short. Every hose should have at least a slight bend. Otherwise, the union will be pulled to one side or held rigidly decreasing performance and life.

確保軟管是否有太短或太緊的現象,每條軟管最少要有一點預留量,否則,旋轉接頭會有拉扯偏單一側或是擠壓,然而會造成性能的減低和使用壽命的減短。!

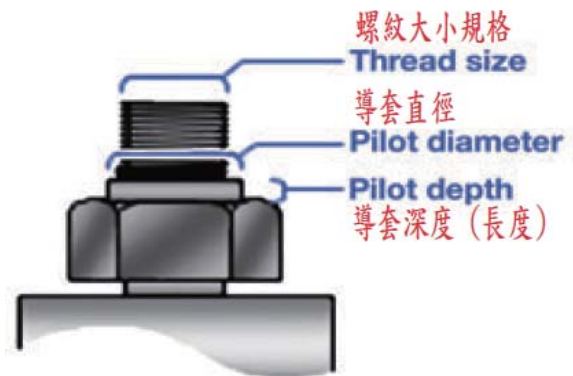


## 旋轉接頭（開 / 閉功能 **ON / OFF**）安裝注意事項 1

### **SELF-SUPPORTED COOLANT UNIONS**

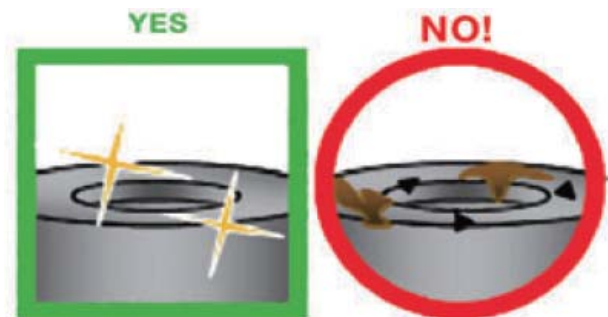
- A. Make sure this union will fit. Compare this union to the old union to match pilot diameter, pilot depth, thread size, thread direction (left-hand or right-hand) and thread type.

請確認這個接頭與原本接頭是否相符，導套的直徑和深度，螺紋的大小及螺紋連接方向（左旋或是右旋）螺紋規格。



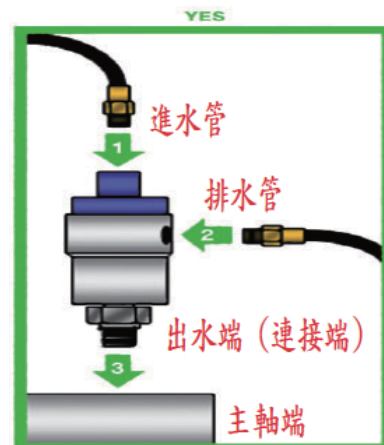
- B. Clean the mounting surfaces. The spindle must be clean, with no chips, no burrs, and no dents. Otherwise, the union will vibrate.

主軸安裝的端面，必須要乾淨清潔無毛邊或灰塵和凸起，這些都會引起旋轉接頭偏擺和震動的發生。



- C. Connect hose first. Coolant supply hose must be connected BEFORE mounting the union on the spindle. Otherwise, union may be damaged.

首先要連接軟管時，進油管必須要裝在主軸時之前完成。否則，安裝順序不當容易造成旋轉接頭的損壞。



## **WARNING !**

Do not disassemble or replace parts or sealing material WENSHUNG rotary joint. Easily affect the rotary joint damage caused by the loss of the machine.

If you have technical problems or installing optional, please consult the relevant technical departments **FU YANG** companies.

請勿自行拆解或更換 WENSHUNG 旋轉接頭原有組件或密封材料，容易影響旋轉接頭毀損造成機器上的損失，如果有技術或安裝選購的問題，請向有關 **FU YANG** 公司相關技術部門諮詢。

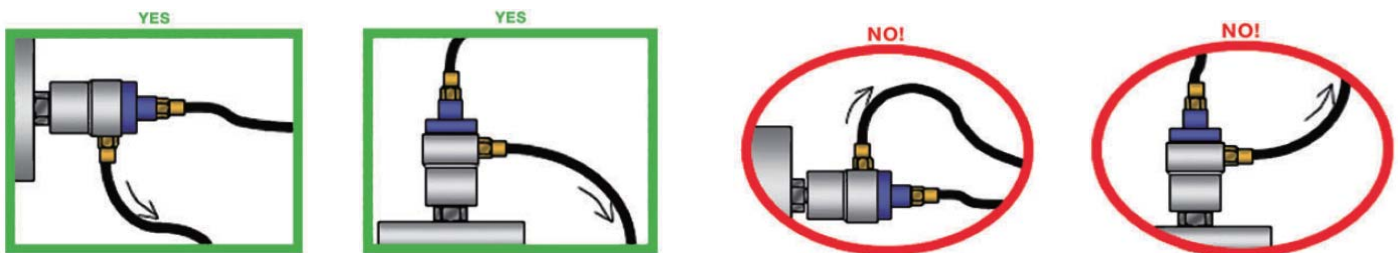


## 旋轉接頭（開 / 閉功能 **ON / OFF**）安裝注意事項 2

### SELF-SUPPORTED COOLANT UNIONS

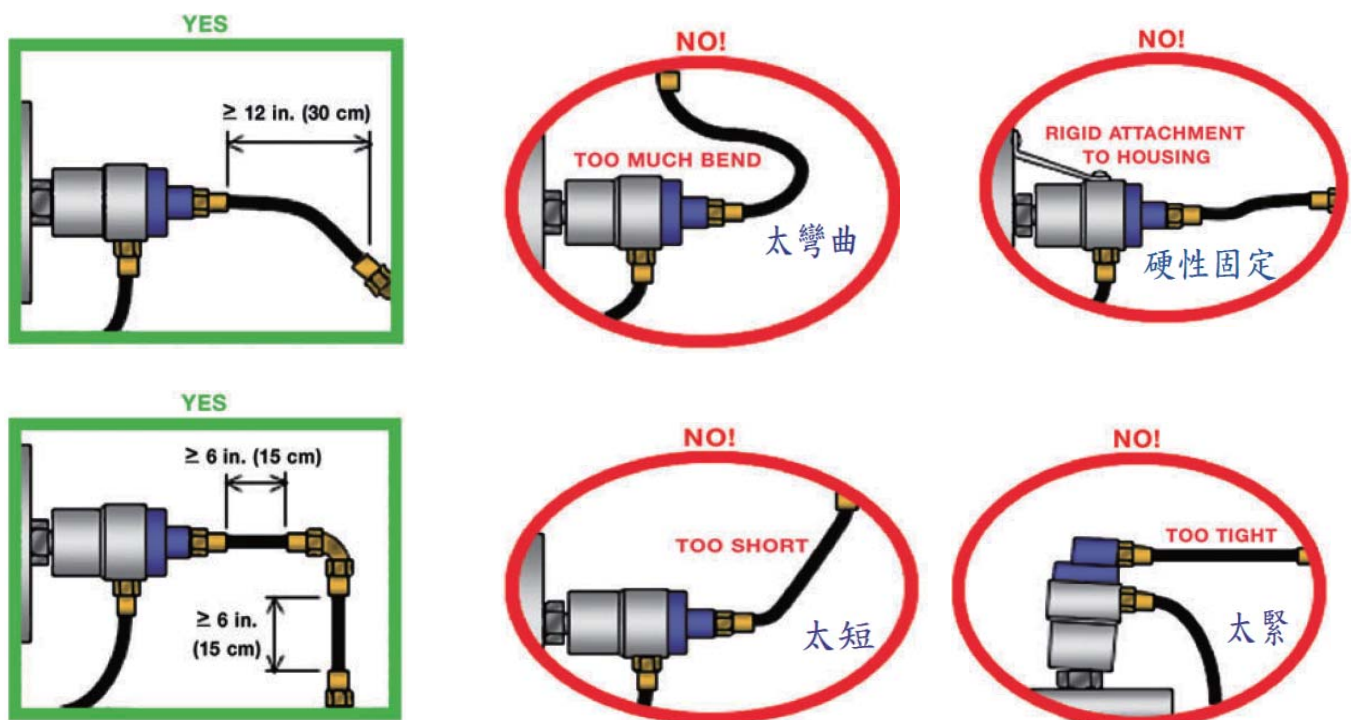
- D. Make sure drain points down. Drain hose always must run down, with no section going up. If no drain hose is used, open vent hole must point straight down. Otherwise, coolant may damage the ball bearings in the union.

確保排水軟管是朝下的，排水管必須要朝下往下，確認排水管不能高於接頭的排水孔，且排出的水是朝下流。否則，冷卻液有可能造成旋轉接頭內的軸承損壞。



- E. Make sure hoses are not too tight or too short. Every hose should have at least a slight bend. Otherwise, the union will be pulled to one side or held rigidly, decreasing performance and life.

確保軟管是否有太短或太緊的現象，每條軟管最少要有一點預留量。否則，旋轉接頭會有拉扯偏單一側或是擠壓，然而會造成性能的減低和壽命的減短。





## ***R038 – R200 Series Rotating Unions***

### **SINGLE PASSAGE – DOUBLE PASSAGE**



流體介質 Fluid	最大壓力 Max BAR	最大溫度 Max °C	最大轉速 Max rpm/min <sup>-1</sup>
水 Water	25	100	3,000(R038-R100) 1,500(R114-R200)
蒸汽 Steam	10	180	1,000(R038-R200)
油 Oil	25	180	3,000(R038-R100) 1,500(R114-R200)
空氣 / 真空 Air / Vacuum	10 0.98	100	1,500(R038-R100) 1,000(R114-R200)

旋轉接頭是將流體介質傳輸到旋轉動態設備機構上，經由精細密封件裝置，來達到無洩漏且理想的傳輸的功能和效用。旋轉接頭運用領域覆蓋行業很廣泛，因此產品使用範圍包括機床、紡織、印染、印刷、橡膠、造紙、化學、食品加工 … 等等。

流體介質包括水、蒸汽、油、空氣、真空等等。而旋轉接頭產品內的零件中，連接密封件裝置是採用特殊耐磨、耐熱、耐腐蝕材質，經過精密加工組裝後達到品質好、壽命長且無洩漏的旋轉接頭，來針對不同行業及使用條件下讓客戶選擇使用，滿足客戶加工設備上的工作條件，減低業者生產成本，來達到使用旋轉接頭產品實質上的效益。

如圖所標示，客戶可依照流體介質種類、壓力、溫度、轉速、產品材質、連接方式來選擇與訂購。

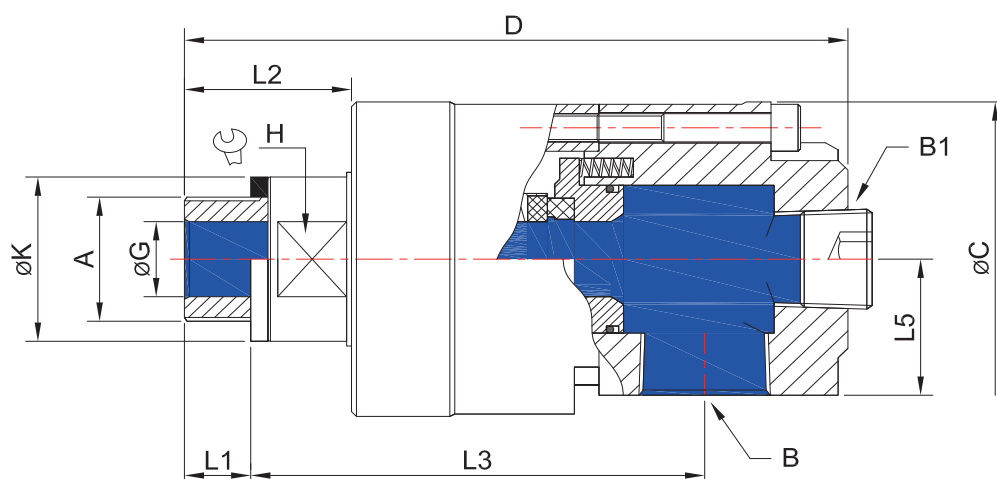
The rotary joint used to deliver the fluid medium to the rotary dynamic transmission organ and to pass through precision sealing equipment. Which can achieve non-leak and perfect transmission function and efficacy. The application of the rotary joints covers a wide area in the field, therefore, the use scope of the products includes machine tool, textiles, printing and dyeing, printing, rubber, paper making, chemistry and food processing etc.

The fluid medium includes water, steam, oil and air Etc. In the parts of the rotary connectors products, it is employed special abrasion-resistant, heating-resistant and corrosion-resistant material to connect the sealing equipment. After precision processing assembly, a high quality, long life span and non-leakage rotary joints are produced. The customers in different fields and different fields and different work conditions can make their own choice to the products to meet the demand of work conditions of processing equipment. The joints can reduce the products cost of the clients to achieve the actual efficiency by using the rotary joints. If there are some problems in terms of technology, please consult with our company or our agents.

## 如何選擇型號與訂購： *How to order selection:*

										R038	B	2	F	1	L
<b>規格型號</b> Specification/type															
R038 R012 R034 R100															
R114 R112 R200															
<b>密封面材質</b> the materials of sealing surface															
A	碳化矽對石墨碳精 Silicon carbide and Graphite gas carbon														
B	碳化矽對碳化矽 Silicon carbide and Silicon carbide														
C	碳化矽對碳化矽 Tungsten carbide and Tungsted carbide														
<b>密封圈材質</b> the materials of the sealing ring															
1	NBR														
2	SI														
3	EPDM														
4	VITON														
5	TEFLON														
<b>迴路型式</b> passage															
E	單迴路 Single passage														
F	雙迴路、固定式 Double passage stable pattern														
G	雙迴路、旋轉式 Double passage rotary pattern														
<b>結構材質</b> The materials of configuration															
1	標準 (鋁合金對合金鋼) Standard(Aluminum alloy and Steel alloy)														
2	鋁合金對不銹鋼 SUS 304 Aluminum alloy and Stainless Steel SUS 304														
3	不銹鋼 SUS 304 Stainless Steel SUS 304														
<b>結構方式</b> Connection methods															
R	G (ISO 228) RH														
L	RC (ISO 7) RH														
N	NPT RH														
Q	K型法蘭 K type flange														
S	F型法蘭 F type flange														

## SINGLE PASSAGE

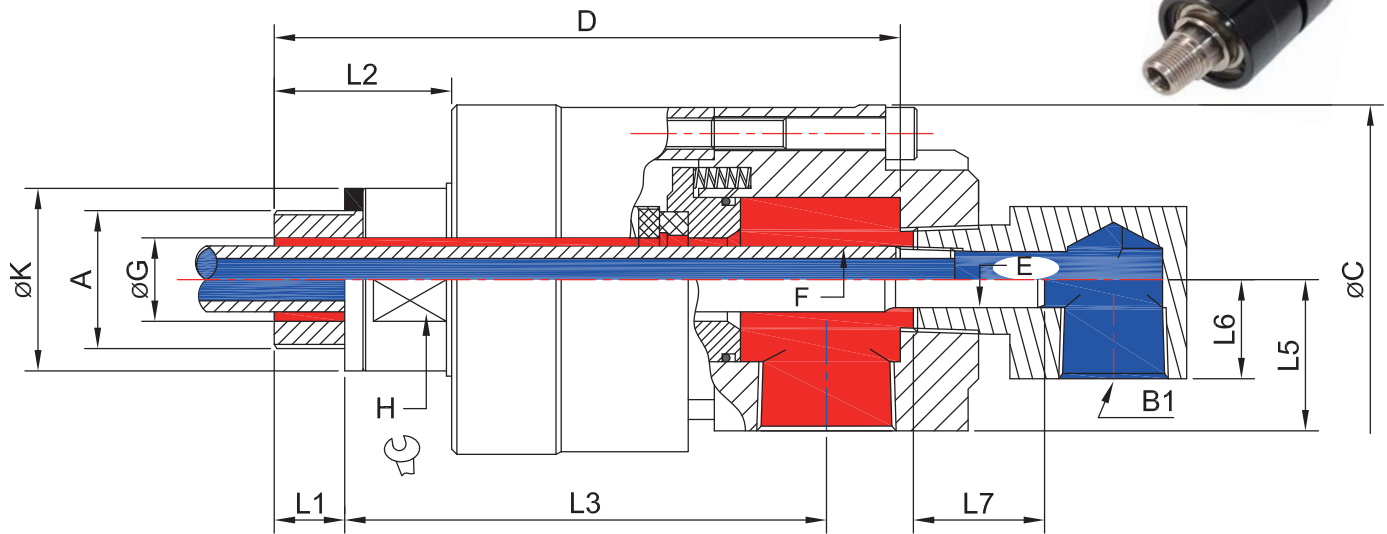


Type	A	B	B1	C Ø	D	G Ø	K Ø	H	L1	L2	L3	L5	Weight Kg
R038	G 3/8"	RC 3/8"	RC 1/4"	50	104.5	10	24	19	8.5	25	76.5	23	0.51
R012	G 1/2"	RC 1/2"	RC 3/8"	56	116.5	13	29	24	11.5	30	82	24	0.69
R034	G 3/4"	RC 3/4"	RC 1/2"	67	135	16	35	30	13.5	34	92.5	29	1.11
R100	G 1"	RC 1"	RC 3/4"	82	164	25	41	36	15.5	39	111	35	1.96
R114	G 1-1/4"	RC 1-1/4"	RC 1"	93	183.5	32	52	46	17.5	46	124	39	3.0
R112	G 1-1/2"	RC 1-1/2"	RC 1-1/4"	108	205	38	60	55	19.5	50	140	46	4.3
R200	G 2"	RC 2"	RC 1-1/2"	120	235	48	68	60	22.5	55	161	50	5.4

- 單迴路旋轉接頭可以依照工作情況來選擇連接方式。
- 傳輸介質入口可以照工作情況選擇側邊或是後端進入。
- 密封件及密封圈為特殊材料所製成的，抗磨損、壽命長、耐腐蝕、不洩漏。
- 旋轉接頭內部有 2 個精密軸承，運轉平穩持久、堅固靈活、摩擦係數小、故可高速運轉。
- 內部密封件磨損的狀況可由產品外觀目測可得，可以預防機械停機或機械損壞，來達到預防的效果和減少損失。
- 密封件磨損更換維修簡易，不用從新購置新品，簡省成本。
- Single passage rotary joint can choose the connection method according to the work condition.
- The entrance of the transmission medium can freely enter from the side or the back according to the work conditions.
- Sealing surface and sealing ring are made of special materials with abrasion resisting, long life span, corrosion resistant and non-leakage.
- There are two precise bearing inside the rotary joint. It can run stably and permanently and is very hard and flexible. The coefficient of the abrasiveness is very small, so it can run at a high speed.
- The abrasive condition of inner sealing parts can be known by the visual observation of the product appearance, which can avoid stopping the machine or impairing the machine to achieve the prevention effect and to reduce the loss.
- It is easy to replace and maintain the worn sealing parts. It is unnecessary to purchase the new ones, so it can save the cost.



## DOUBLE PASSAGE



Type	A	B	B1	C Ø	D	E	F	G Ø	K Ø	H	L1	L2	L3	L5	L6	Kg
R038	G 3/8"	RC 3/8"	RC 1/4"	50	104.5	6	M6xP1.0	10	24	19	8.5	25	76.5	23	16	0.6
R012	G 1/2"	RC 1/2"	RC 3/8"	56	116.5	10	RC 1/8"	13	29	24	11.5	30	82	24	17	0.83
R034	G 3/4"	RC 3/4"	RC 1/2"	67	135	13	RC 1/4"	16	35	30	13.5	34	92.5	29	19	1.32
R100	G 1"	RC 1"	RC 1/2"	82	164	16	RC 3/8"	25	41	36	15.5	39	111	35	22	2.5
R114	G 1-1/4"	RC 1-1/4"	RC 3/4"	93	183.5	22	RC 1/2"	32	52	46	17.5	46	124	39	24	3.5
R112	G 1-1/2"	RC 1-1/2"	RC 3/4"	108	205	26	RC 3/4"	38	60	55	19.5	50	140	46	29	5.12
R200	G 2"	RC 2"	RC 1-1/4"	120	235	32	RC 1"	48	68	60	22.5	55	161	50	36	6.48

- 本型外殼採用鋁合金材質，重量輕，體積小，容易安裝。
  - 零件中所採用不鏽鋼彈簧不生鏽、不阻礙、擾動、流體介質順暢。
  - 旋轉接頭內部有 2 個精密軸承，運轉平穩持久、堅固靈活、摩擦係數小、故可高速運轉。
  - 兩個密封元件材質是有特殊材料所製成，保證長期運轉和抗磨損。
  - 外殼是由精密軸承支承運轉順暢，旋轉時可以減少摩擦。
- 使用的流體介質包括水、油、空氣、真空...等等並廣泛在這使用領域中。
- 維修和更換密封件容易，無需購置新品可達到節省使用成本。
  - This kind of rotary joint can be divided into parts double passage stable specification and double passage rotary specification.
  - Sealing surface and sealing ring are made of special materials with abrasion resistant, long life span, corrosion resistant and non-leakage.
  - The abrasive conditions of inner sealing parts can be known by the visual observation of the product appearance, which can avoid stopping the machine or impairing the machine to achieve the prevention effect and to reduce the loss.
  - There is separate circuits inside the connector. One can make choice according to different work requirement to exert the benefited to the utmost.
  - The shell and bearing are supported by the precision bearing, which can facilitate the rotation and reduce the friction force. The fluid mediums include water, oil and air etc. and are used wildly.
  - It is easy to replace and maintain the worn sealing parts, It is unnecessary to purchase the new ones, so it can save the cost.!

## 單迴路 接頭使用圖示

## SINGLE PASSAGE FOR STATIONARY SYPHON PIPE

迴轉式滾輪汽缸、大滾輪中之流體如冷卻水、油、飽和蒸汽從右端進入，左端排出的場合使用。

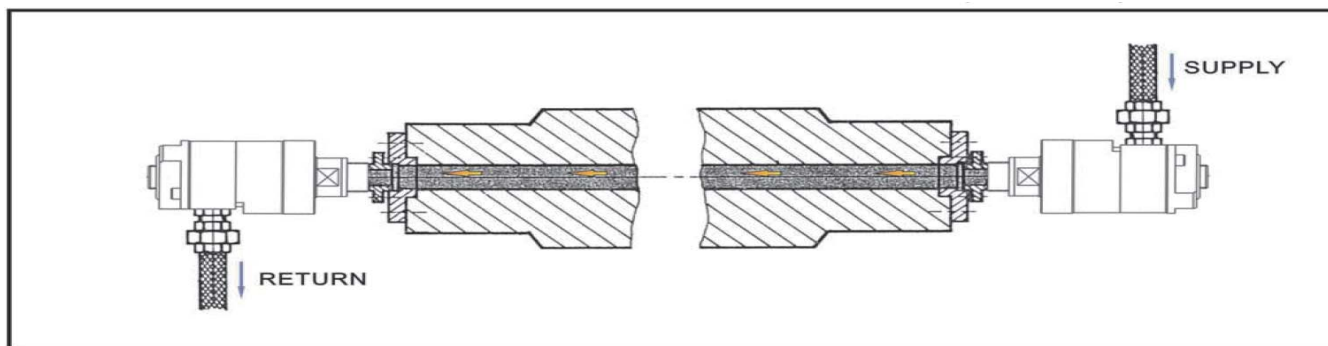
主要使用範圍：

鋼鐵機械滾輪、製紙用車光機械滾輪、塑膠機冷卻引取滾輪。

COOLING-WATER, OIL OR SATURATED VAPOUR PASSES THROUGH THE ROTARY PARTS (SUCH AS ROLLER, DRUM, CYLINDER...ETC) THEN LIQUID IS DRAINED OUT THROUGH THE OTHER SIDE.

### EXAMPLE:

STEEL-MAKING ROLLER PLASTIC COOLING SYSTEM ROLLER PAPER CALENDER ROLLER.



## 雙迴路 內管迴轉式

## DOUBLE PASSAGE

迴轉式滾輪、汽缸、大滾輪中之流體，如蒸汽、水、油、等同時在同側供給和排出之工作條件下使用。

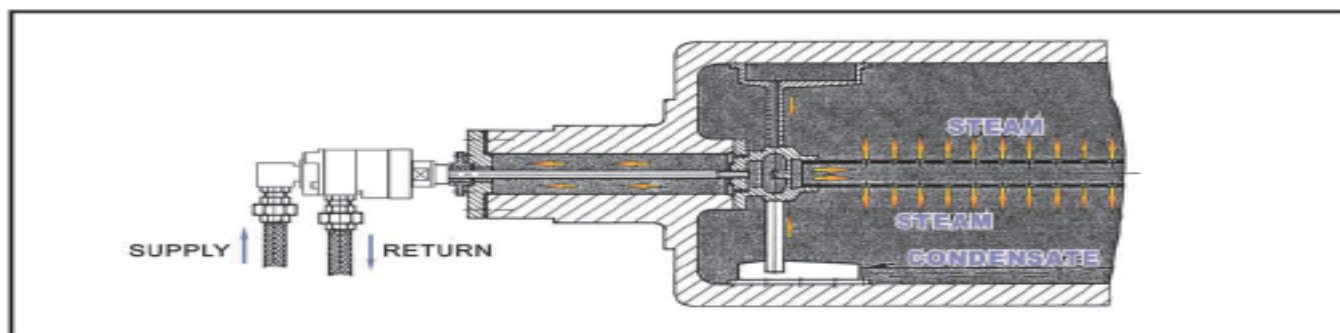
主要使用範圍：

塑膠壓出機、塑膠冷卻引取滾輪、橡膠束駁機。

STEAM, WATER VAPOUR, OR THERMAL OIL MEDIUM PASSES INTO THE ROLLER, DRUM, CYLINDER THROUGH THE INTERNAL PIPE. THEN LIQUID IS BEING DRAINED OUT THROUGH THE SYPHON.

### EXAMPLE:

PAPERMAKING DRYER. ROTATING DRYER ORYER IN MAINI SIZE.





## 雙迴路 內管固定式

### 接頭使用圖示

## DOUBLE PASSAGE

### FOR STATIONARY SYPHON PIPE

迴轉式滾輪、汽缸、大滾輪中之流體，如蒸氣、水、油、等同時在同側供給和排出之工作條件下使用。

如圖（蒸汽中）軟管輸送由旋轉接頭之轉軸心進入經由內管排出流體。

#### 主要使用範圍：

造紙紅乾機，塑膠車光機，染整烘乾機。

如圖（水、熱煤油）用軟管輸送由內管進入經由旋轉接頭之軸心排出流體。

#### 主要使用範圍：

塑膠壓出機、塑膠冷卻引取滾輪、橡膠束駁機。

THE ROTARY PARTS (SUCH AS ROLLER, DRUM, CYLINDER...ETC) PROVIDE STEAM, WATER, OIL LIQUID: AND THESE (STEAM, WATER, OIL LIQUID) ARE BEING DRAINED OUT AT THE SAME SIDE.

THE FIGURE 1. STEAM IS BEING SENT INTO THE ROTARY JOINT. PASSING THROUGH INTERNAL PIPE. THEN LIQUID IS BEING DRAINED OUT.

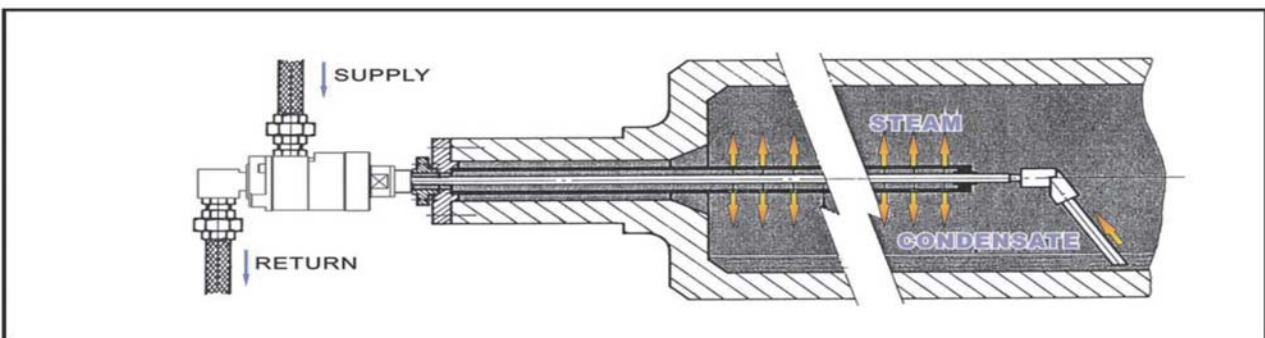
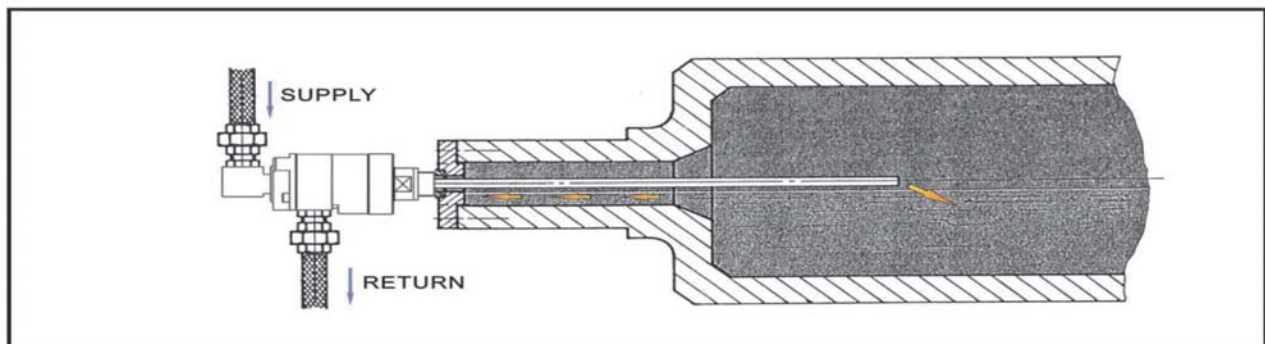
#### EXAMPLE:

PAPER MAKING DRYER PLASTIC MAKING CALENDER DYING MACHINE DRYER.

THE FIGURE 2. THERMAL OILY MEDIA BEING SENT INTO THE INTERNAL PIPE AND LIQUID BEING DRAINED OUT THROUGH THE MAIN SHAFT OF THE JOINT.

#### EXAMPLE:

PLASTIC MAKING EXTRUDER PLASTIC COOLING ROLLER RUBBER MACHINE.





## ***RH* Type Rotary Unions**

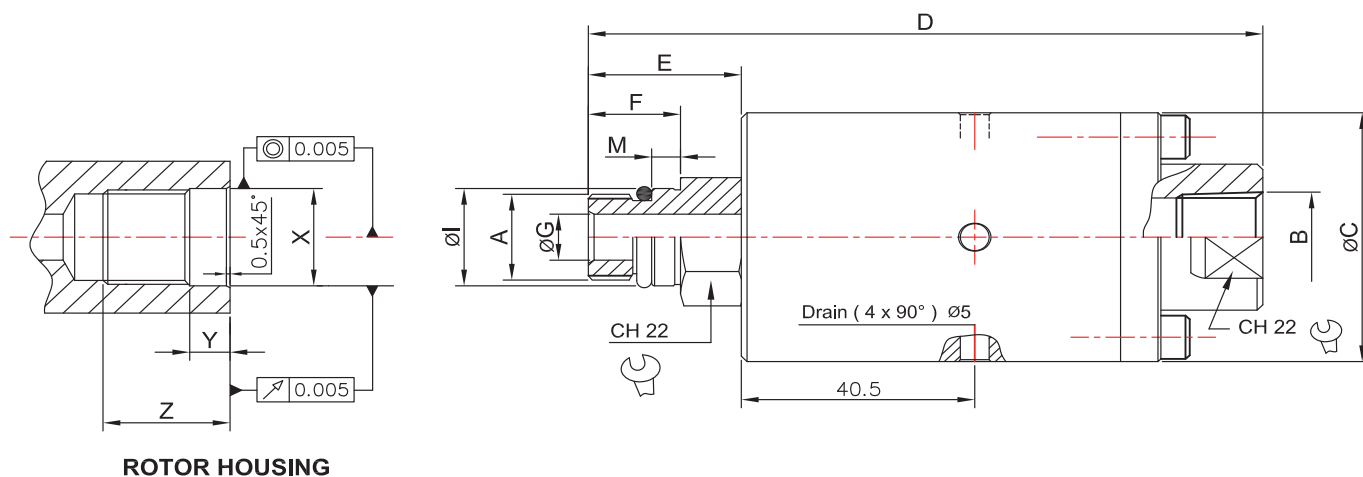
- Single passage for coolant.
  - Closed seals for transfer line and similar applications.
  - Balanced mechanical Seals made of Tungsten Carbide.
  - Even in difficult working conditions can be long running.
  - Alloy steel housing and stainless steel rotor.
- If you have any technical questions,  
Can contact local **FU YANG** related departments.

### **Operating Date**

Media Fluid	Oil / Water
Maximum Pressure	140 BAR
Maximum Temperature	120 °C
Maximum Speed	12,000 rpm/min <sup>-1</sup>
Run Dry	NO

- 為了單通道冷卻液而設計。
  - 常閉式密封無障礙的設計直通傳輸。
  - 平衡的機械密封件材質是碳化鎢合金所製成的。
  - 即使在困難工作條件下長期運轉。
  - 合金鋼外殼和不鏽鋼轉軸。
- 如有任何旋轉接頭技術上疑問，可聯繫當地 **富陽公司** 相關部門洽詢。

### **RH Axial Connection**



Ordering No:	A	B	øC	D	E	F	øG	øH	M	X	Y	Z	Kg
RH-U05LN3	5/8"-18UNF LH	3/8" RC	46	120	29.5	19	8.5	16.650/16.640	5	16.652/16.660	9	24	0.85
RH-U05R3	5/8"-18UNF RH	3/8" RC	46	120	29.5	19	8.5	16.650/16.640	5	16.652/16.660	9	24	0.85
RH-M16LN3	M16xP1.5 LH	3/8" RC	46	117	26.5	16	8.5	17.995/17.985	5	17.997/18.005	9	21	0.85
RH-M16RN3	M16xP1.5 RH	3/8" RC	46	117	26.5	16	8.5	17.995/17.985	5	17.997/18.005	9	21	0.85



## ***RB Series Rotary Unions***

- Single passage for hydraulic oil.
- Product shaft and the shell material in alloy steel.
- Can be adapted for other media upon request.
- Product design space volume small, the user easy to install.

If you have any technical questions,

Can contact local **FU YANG** related departments

- Applications:

General machine tool, workstations, hydraulic machine and special machine...Etc.

### **Operating Date**

Media Fluid	Oil / Water
Maximum Pressure	300 / 25 BAR
Maximum Temperature	120 °C
Maximum Speed	350 rpm/min <sup>-1</sup>
Run Dry	YES

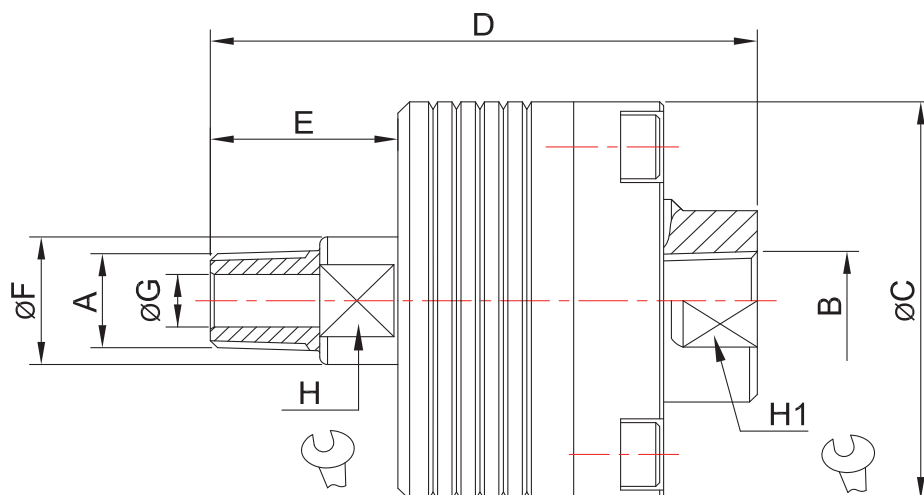
- 單通道設計是為了用於液壓油運轉。
- 產品的轉軸和外殼材質均採用合金鋼材質。
- 可根據不同需求適用於其他的流體介質。
- 產品設計上體積空間小，用戶容易安裝。

如有任何旋轉接頭技術上疑問，可聯繫當地 **富陽公司** 相關部門洽詢。

- 應用範圍：

一般工具機，工作站，液壓機器和專用機器...等等。

## **RB Axial Connection**



Ordering No:	A	B	øC	D	E	F	øG	H	H1	Kg
RB-014L	1/4" RC	1/4" RC	53	70	24	17	7	14	24	0.6
RB-038L	3/8" RC	3/8" RC	63	75	26	20	10	17	30	0.89
RB-012L	1/2" RC	1/2" RC	68	88	32	25	12	22	38	1.24
RB-034L	3/4" RC	3/4" RC	78	96	34	30	18	27	42	1.75
RB-100L	1" RC	1" RC	83	108	40	35	23	31	47	2.05



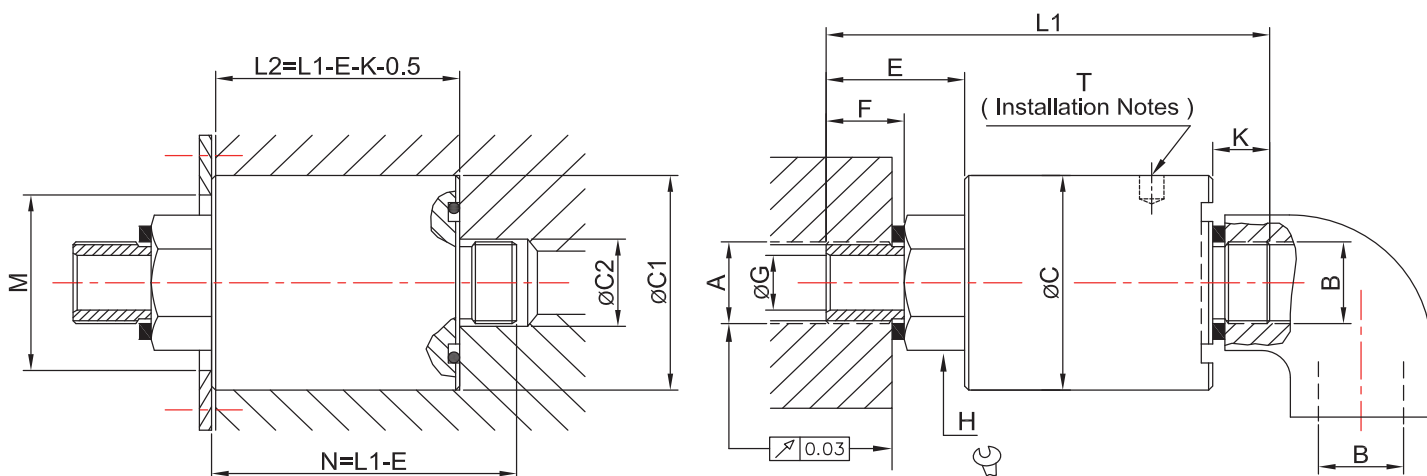
## **RP Type Rotary Unions**

- Full-media flow designs.
  - Self-supported rotating union.
  - Axial housing connections. Axial or radial housing connection by means of elbow
  - Balanced mechanical Seals made of Tungsten Carbide.
  - Heavy-duty design.
  - Alloy steel housing and steel rotor.
- If you have any technical questions,  
Can contact local **FU YANG** related departments.

### **Operating Date**

Media Fluid	Oil / Water
Maximum Pressure	70 BAR
Maximum Temperature	100 °C
Maximum Speed	1,500 rpm/min <sup>-1</sup>
Run Dry	NO

- 多款流體設計。
  - 可自身支撐的旋轉接頭。
  - 外殼軸向後端連接，在軸向和徑向均可用彎頭連接。
  - 平衡的機械密封件材質是碳化鎢合金所製成的。
  - 結構上加強設計。
  - 合金鋼外殼和合金鋼轉軸。
- 如有任何旋轉接頭技術上疑問，可聯繫當地 **富陽公司** 相關部門洽詢。



Ordering No:	A	B	øC	øC1 +0.1 +0.2	øC2	E	F	øG	H	K	L1	L2	T	M	N	Kg
RP-038H	G 3/8"	G 3/8"	50	50	18	26	16	10	22	12	93	54.5	4	40	67	0.77
RP-012H	G 1/2"	G 1/2"	55	55	22	34	19	13	30	14	109	60.5	6	45	75	1.1
RP-034H	G 3/4"	G 3/4"	63	63	28	34	19	16	36	16	122	71.5	6	53	88	1.75
RP-100H	G 1"	G 1"	80	80	35	43	22	23	46	18	140	78.5	6	66	97	2.26



## **RBH Type Rotary Unions**

- Full-media flow designs.
  - Self-supported rotating union.
  - Axial housing connections.
  - Designed for high media pressure and high RPM.
  - Seals made of Tungsten Carbide.
  - Double row ball bearing.
  - Alloy steel housing and steel rotor.
- If you have any technical questions,  
Can contact local **FU YANG** related departments.

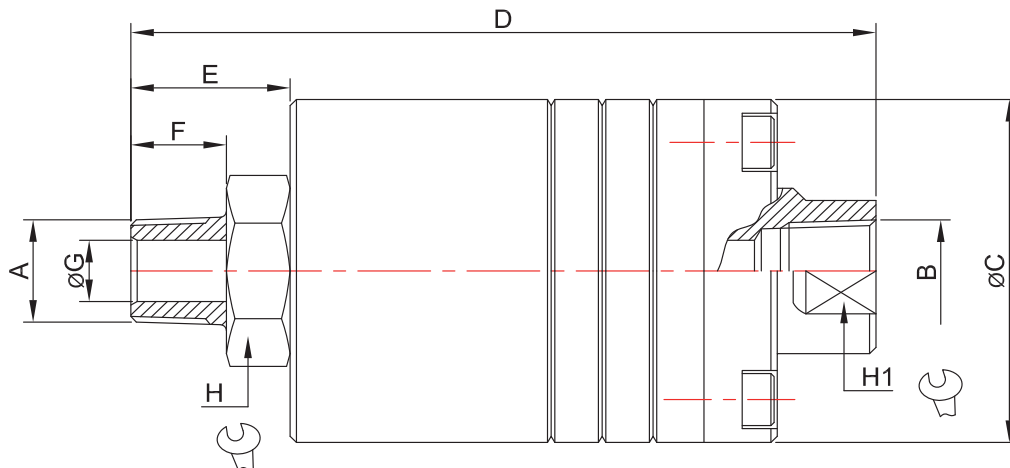
### **Operating Date**

Media Fluid	Oil / Water
Maximum Pressure	210 / 70 BAR
Maximum Temperature	100 °C
Maximum Speed	1,500 rpm/min <sup>-1</sup>
Run Dry	NO

- 多款流體設計。
- 自身支撐之旋轉接頭。
- 外殼軸向後端連接。
- 為了流體的高壓高轉速設計。
- 密封件材質是碳化鎢合金所製成的。
- 雙列軸承運轉順暢。
- 合金鋼外殼和合金鋼轉軸。

如有任何旋轉接頭技術上疑問，可聯繫當地 **富陽公司** 相關部門洽詢。

### **RBH Axial Connection**



Ordering No:	A	B	øC	D	E	F	øG	H	H1	Kg
RBH-014R	RC 1/4"	RC 1/4"	56	117	25	15	8	26	23	1.3
RBH-014G	G 1/4"	G 1/4"	56	117	25	15	8	26	23	1.3
RBH-038R	RC 1/4"	RC 1/4"	56	117	25	15	10	26	23	1.42
RBH-038G	G 1/4"	G 1/4"	56	117	25	15	10	26	23	1.42
RBH-012R	RC 1/4"	RC 1/4"	62	122	30	20	13	32	29	1.65
RBH-012G	G 1/4"	G 1/4"	63	122	30	20	13	32	29	1.65





## ***RHL Type Rotary Unions*** ***DOUBLE PASSAGE***

- Full-media flow designs.
- Self-supported rotating union.
- Radial housing connections.
- The shaft end is bearing support.
- Carbon-filled Teflon seals.
- Alloy steel housing and steel rotor.

If you have any technical questions,

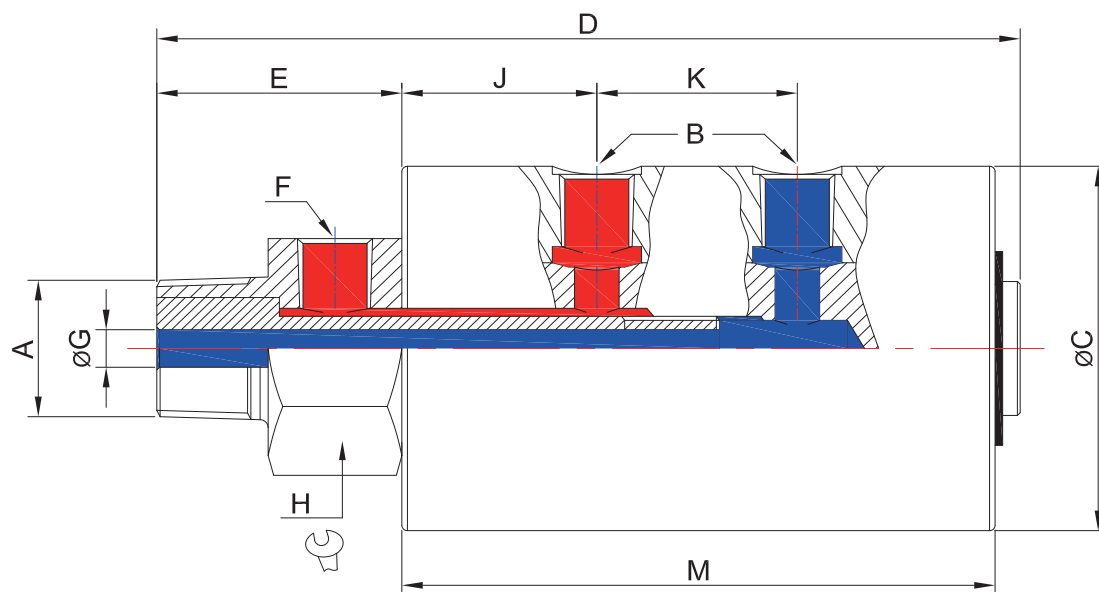
Can contact local **FU YANG** related departments.

### **Operating Date**

Media Fluid	Oil / Water	Air
Maximum Pressure	105 / 25 BAR	10 BAR
Maximum Temperature	100 °C	100 °C
Maximum Speed	450 rpm/min <sup>-1</sup>	150 rpm/min <sup>-1</sup>
Run Dry	YES	YES

- 多款流體設計。
- 自身支撐之旋轉接頭。
- 外殼徑向側邊連接。
- 轉軸端均有軸承支撐運轉。
- 密封件材質為複合材料石墨與鐵氟龍。
- 合金鋼外殼和合金鋼轉軸。

如有任何旋轉接頭技術上疑問，可聯繫當地 **富陽公司** 相關部門洽詢。



Ordering No:	A	B	øC	D	E	F	øG	H	J	K	Kg
RHL-034TW2	3/4" RC	1/4" RC	68	155	44	1/4" RC	7	41	35	36	3.0
RHL-100TW2	1" RC	3/8" RC	78	180	55	3/8" RC	8	46	39	42	4.55
RHL-114TW2	1-1/4" RC	1/2" RC	92	216	63	1/2" RC	12	60	47	53	7.76
RHL-112TW2	1-1/2" RC	3/4" RC	105	234	66	3/4" RC	15	65	52	60	10.8



## **RS Series Rotary Unions**

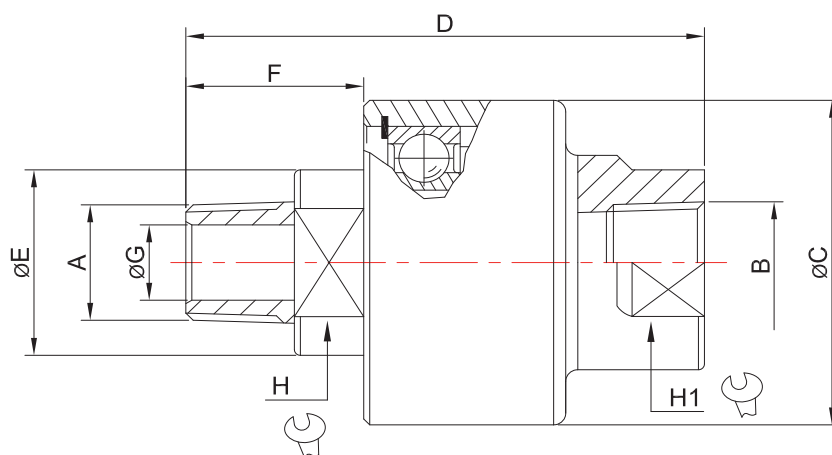
- Single passage for oil and coolant or air.
- Product shaft and the shell material in alloy steel.
- Rotary unions internal bearing supported by running more smoothly.
- Product design space volume small, the user easy to install.
- Applications:  
General machine tool, workstations, hydraulic machine and special machine...Etc.

### **Operating Date**

Media Fluid	Oil / Water	Air
Maximum Pressure	210 / 25 BAR	10 BAR
Maximum Temperature	120 °C	120 °C
Maximum Speed	450 rpm/min <sup>-1</sup>	150 rpm/min <sup>-1</sup>
Run Dry	YES	YES

- 單通道設計是為了用於油和冷卻液或是空氣運轉。
- 產品的轉軸和外殼材質均採用合金鋼材質。
- 旋轉接頭內部有軸承支撐下運轉更加順暢。
- 產品設計上體積空間小，用戶容易安裝。
- 應用範圍：  
一般工具機，工作站，液壓機器和專用機器...等等。

### **RS Axial Connection**



Ordering No:	A	B	øC	D	E	F	øG	H	H1	Kg
RS-014	1/4" RC	1/4" RC	39	68	21	22	8	17	19	0.3
RS-038	3/8" RC	3/8" RC	42	70	23	23	10	19	21	0.34
RS-012	1/2" RC	1/2" RC	56	86	32	29.5	13	26	32	0.73
RS-034	3/4" RC	3/4" RC	66	92	37	30.5	16	32	36	1.07
RS-100	1" RC	1" RC	82	108	47	36	24	41	46	1.87
RS-114	1-1/4" RC	1-1/4" RC	93	120	57	42	30	50	55	2.35
RS-112	1-1/2" RC	1-1/2" RC	112	125	68	42	36	60	70	4.45
RS-200	2" RC	2" RC	117	142	74	50	46	65	80	5.15



## **RT Series Rotary Unions**

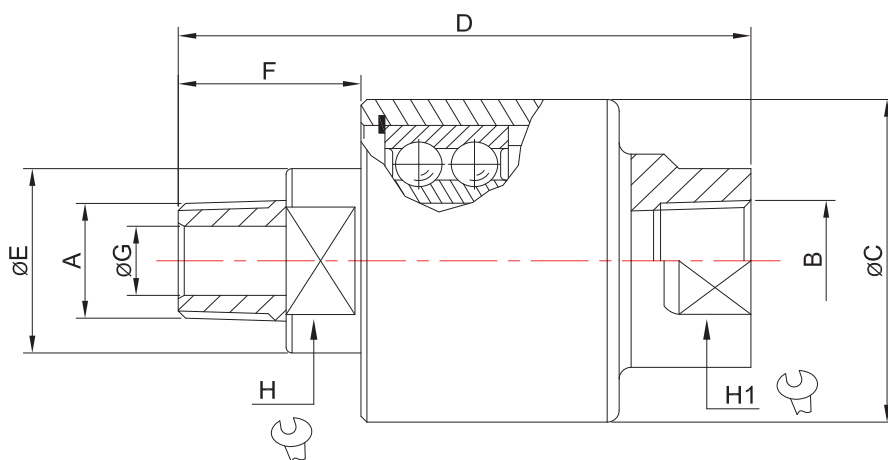
- Single passage for oil and coolant or air.
- Product shaft and the shell material in alloy steel.
- Rotary unions with double row bearing supported by smooth and stable operation.
- Product design space volume small, the user easy to install.
- Applications:  
General machine tool, workstations, hydraulic machine and special machine.

### **Operating Date**

Media Fluid	Oil / Water	Air
Maximum Pressure	300 / 25 BAR	10 BAR
Maximum Temperature	120 °C	120 °C
Maximum Speed	650 rpm/min <sup>-1</sup>	150 rpm/min <sup>-1</sup>
Run Dry	YES	YES

- 單通道設計是為了用於油和冷卻液或是空氣運轉。
- 產品的轉軸和外殼材質均採用合金鋼材質。
- 旋轉接頭內部有雙列軸承支撐下運轉更加順暢穩固。
- 產品設計上體積空間小，用戶容易安裝。
- 應用範圍：  
一般工具機，工作站，液壓機器和專用機器...等等。

### **RT Axial Connection**



Ordering No:	A	B	øC	D	E	F	øG	H	H1	Kg
RT-014	1/4" RC	1/4" RC	39	76	21	23	6	17	19	0.35
RT-038	3/8" RC	3/8" RC	42	78	23	25	8	19	21	0.41
RT-012	1/2" RC	1/2" RC	56	95.5	32	30.5	12	26	32	0.89
RT-034	3/4" RC	3/4" RC	66	100.5	37	31.5	15	32	36	1.18
RT-100	1" RC	1" RC	82	121	47	37	22	41	46	2.46
RT-114	1-1/4" RC	1-1/4" RC	93	135	55	43	26	50	55	3.55
RT-112	1-1/2" RC	1-1/2" RC	112	138	62	43	30	55	65	4.47
RT-200	2" RC	2" RC	117	158	72	51	40	65	80	6.35



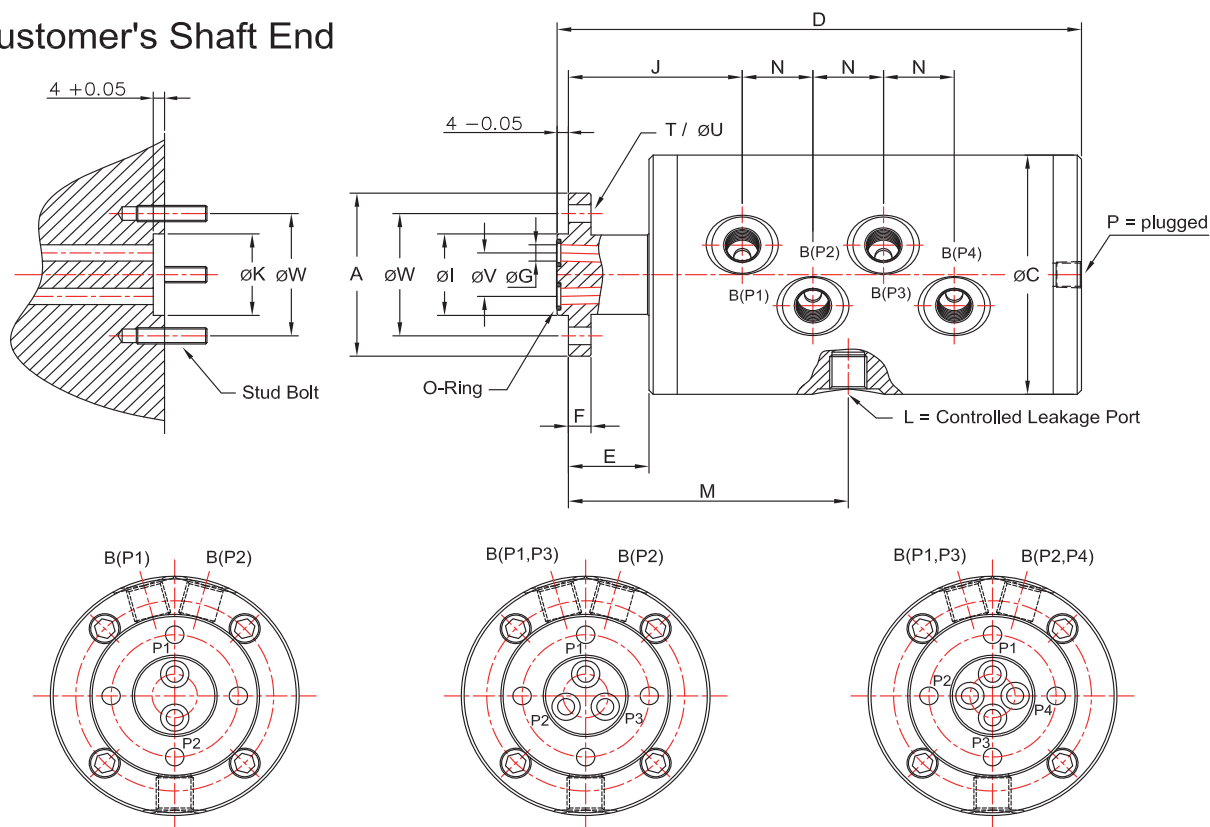
## ***RMH-HP Series Rotating Union*** **DN 8, 2-4 passages**

- 2-4 passages.
  - Hydrostatic bearing design independently.
  - Ball bearing support.
  - Vent to control leakage, depends on the pressure shaft secondary seal.
  - The shell for aluminum alloy is to lose weight.
  - Shaft made of alloy steel.
  - Special design for high speed.
  - If you have technical questions, please inquire the local vendors.
- 
- 2-4 獨立通道。
  - 靜壓獨立軸承設計。
  - 球型軸承支撐。
  - 排氣孔為了控制洩漏，取決於壓力軸進行二次密封。
  - 不同的流體特殊運用設計是主要提供客戶所需。
  - 外殼材質為鋁合金在於減輕重量。
  - 旋轉軸材質為合金鋼。
  - 主要為了高壓高轉速特殊設計運用。
  - 如有技術使用上疑問，請洽當地有關經銷商諮詢。

### **Operating Date**

Max. Hydraulic Pressure	2,900 PSI	200 BAR
Min. Hydraulic Pressure	40 PSI	3 BAR
Maximum Speed	3,000 RPM	3,000 rpm/min <sup>-1</sup>
Max. Temperature	60°C	> 60°C consulting technical personnel

### **Customer's Shaft End**



DN	B	Ordering No:	A Rotor Flange	C Ø	D	E	F	G Ø	I Ø	K Ø	J	L	M	N	T	U Ø	V Ø	W Ø	Weight Kg
2 x 8	2 x G1/4"	RMH-F060030HP2	ø60	88	135.5	28.5	8	2x6	30 f7	30 H7	61.5	G 1/4"	99	1x25	4x90°	6.6	16	45	2.8
3 x 8	3 x G1/4"	RMH-F060030HP3	ø60	88	160.5	28.5	8	3x6	30 f7	30 H7	61.5	G 1/4"	99	2x25	4x90°	6.6	16	45	3.4
4 x 8	4 x G1/4"	RMH-F060030HP4	ø60	88	185.5	28.5	8	4x6	30 f7	30 H7	61.5	G 1/4"	99	3x25	4x90°	6.6	16	45	3.7

## RMH-H2A1 Series Rotating Union Mixed Fluid High-Speed

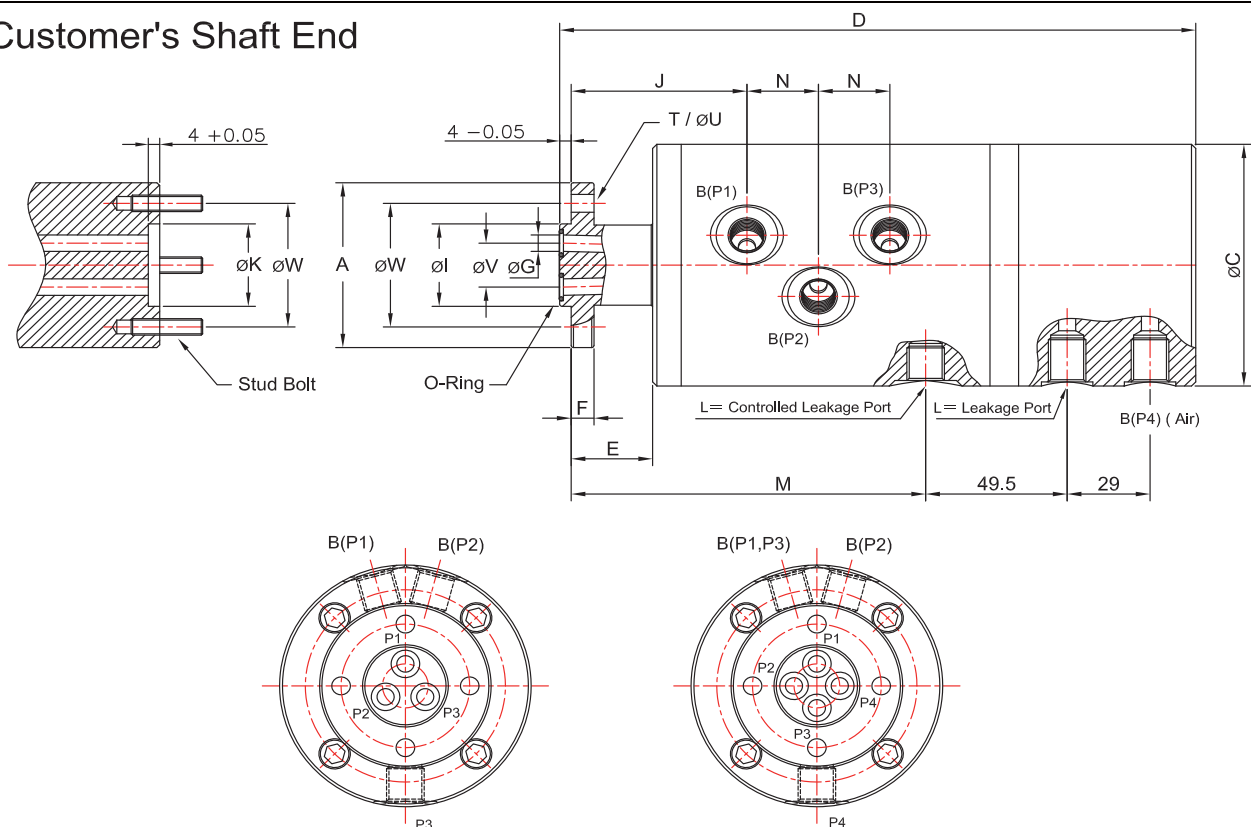


### Operating Date

Max. Hydraulic Pressure	2,900 PSI	200 BAR
Min. Hydraulic Pressure	40 PSI	3 BAR
Max. Air Pressure	115 PSI	8 BAR
Maximum Speed	3,000 RPM	3,000 rpm/min <sup>-1</sup>
Max. Temperature	60°C	> 60°C consulting technical personnel

- Hydrostatic bearing design independently.
- Special design of the hydraulic oil and air.
- Vent to control leakage, depends on the pressure shaft secondary seal.
- Different fluid design mainly provides customers of the special application requirements.
- The shell for aluminum alloy is to lose weight.
- Shaft made of alloy steel.
- Special design for high speed.
- If you have technical questions, please inquire the local vendors.
- 靜壓獨立軸承設計。
- 液壓油和空氣的特殊應用設計。
- 排氣孔為了控制洩漏，取決於壓力軸進行二次密封。
- 不同的流體特殊運用設計是主要提供客戶所需。
- 外殼材質為鋁合金在於減輕重量。
- 旋轉軸材質為合金鋼。
- 主要為了高壓高轉速特殊設計運用。
- 如有技術使用上疑問，請洽當地有關經銷商諮詢。

### Customer's Shaft End



DN	B	Ordering No:	A Rotor Flange	C Ø	D	E	F	G Ø	I Ø	K Ø	J	L	M	N	T	U Ø	V Ø	W Ø	Weight Kg
3 x 8	3 x G1/4	RMH-060030H2A1	Ø60	88	197.5	28.5	8	3x6	30 f7	30 H7	61.5	G1/4	99	1x25	4x90°	6.6	16	45	3.6
4 x 8	4 x G1/4	RMH-060030H3A1	Ø60	88	222.5	28.5	8	4x6	30 f7	30 H7	61.5	G1/4	99	2x25	4x90°	6.6	16	45	4.1





## ***R108F Type Rotary Unions*** **DOUBLE PASSAGE**

- Full-media flow designs.
- Self-supported rotating union.
- Flange rotor.
- Radial housing connections.
- Low torque.
- Double-balanced mechanical seal.
- Aluminum alloy housing and cast iron rotor.

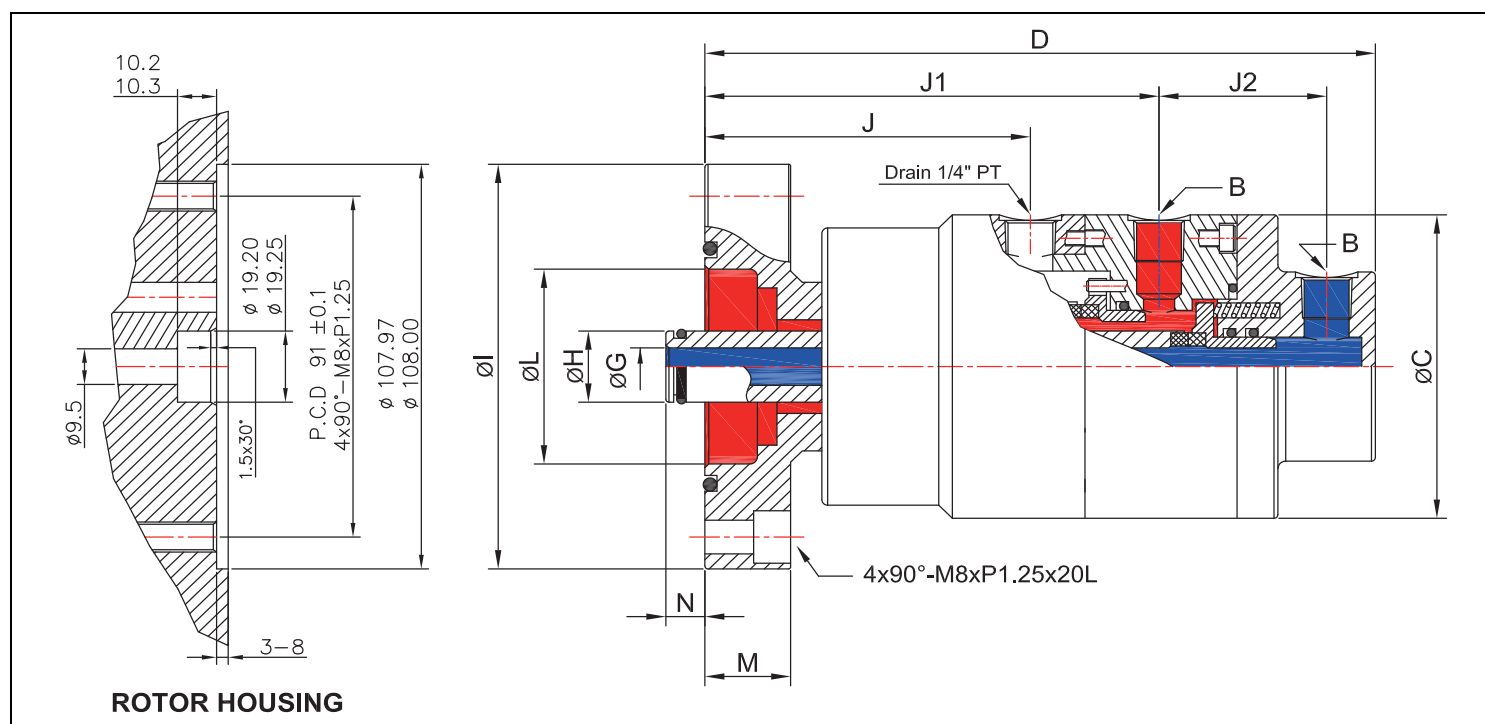
If you have any technical questions,  
Can contact local **FU YANG** related departments.

### **Operating Date**

Media Fluid	Oil / Water	Air
Maximum Pressure	70 BAR	10 BAR
Maximum Temperature	120 °C	120 °C
Maximum Speed	3,000 rpm/min <sup>-1</sup>	5,000 rpm/min <sup>-1</sup>
Run Dry	NO	YES

- 多款流體設計。
- 自身支撐之旋轉接頭。
- 法蘭型轉軸。
- 外殼徑向側邊連接。
- 低扭矩。
- 雙個平衡式密封組件。
- 鋁合金外殼和合金鋼轉軸。

如有任何旋轉接頭技術上疑問，可聯繫當地 **富陽公司** 相關部門洽詢。



Fluid	Ordering No:	B	ØC	D	ØG	H	ØL	J	J1	J2	ØL	M	N	Kg
Air	R108F-H014TW2SAP	1/4" RC	81	172	10	19.00 19.05	107.95 107.92	83.5	116.5	43	52	22	10.1	3.39
Oil / Water	R108F-H014TW2STP	1/4" RC	81	172	10	19.00 19.05	107.95 107.92	83.5	116.5	43	52	22	10.1	3.42

## RM-HP Series Rotary Unions 2-4 PASSAGES

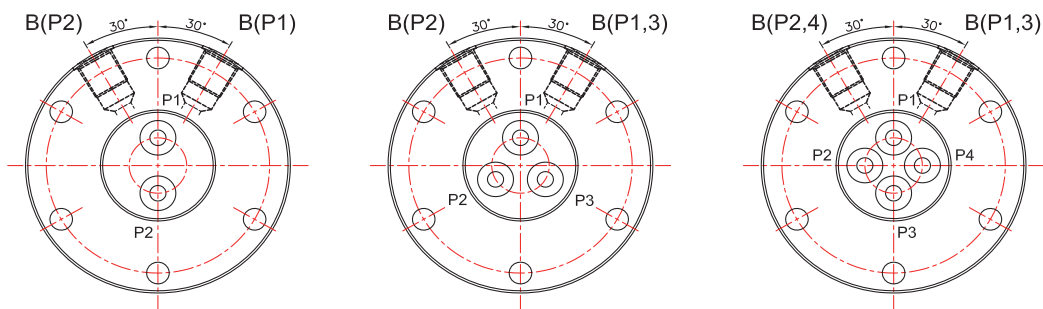
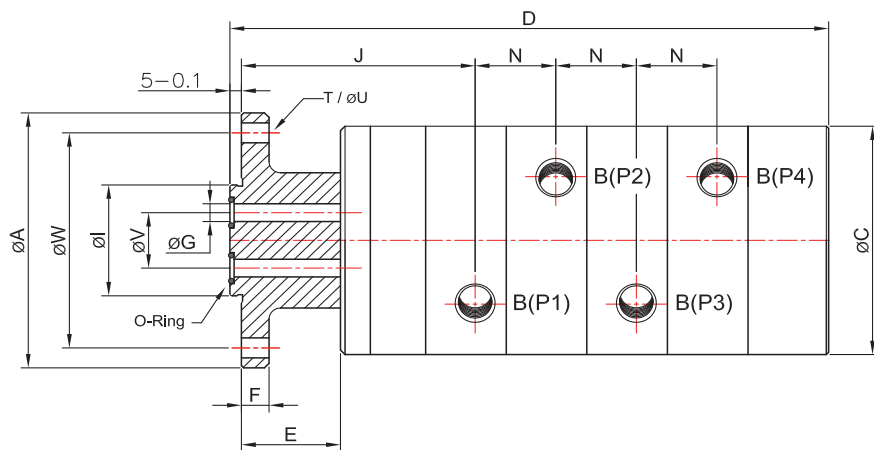


- 2-4 passages.
- Self-supported rotating union Ball bearing support.
- Flange rotor.
- Carbon-filled Teflon seals Shaft made of alloy steel.
- Alloy steel housing.
- Alloy steel rotor.
- If you have technical questions, please inquire the local vendors.

- 2-4 獨立通道設計。
- 自身球形軸承支撐旋轉。
- 法蘭式轉盤。
- 軸心採用旋轉密封為複合材質石墨鐵氟龍。
- 外殼材質為合金鋼。
- 轉軸材質為合金鋼。
- 如有技術上疑問，請洽當地有關銷售商。

### Operating Date

Media Fluid	Air	Oil
Maximum Pressure	10 BAR	300 BAR
Maximum Speed	150 rpm/min <sup>-1</sup>	450 rpm/min <sup>-1</sup>
Maximum Temperature	100 °C	



B	Ordering No:	A	ØC	D	E	F	ØG	ØI	J	N	T	ØU	ØV	ØW	Weight Kg
2 x 3/8" RC	RM-HP2	Ø115	103	190	43	12	2x7	50 f7	101.5	1x35	6x60°	9	25	97	10.15
3 x 3/8" RC	RM-HP3	Ø115	103	225	43	12	3x7	50 f7	101.5	2x35	6x60°	9	16	97	12.95
4 x 3/8" RC	RM-HP4	Ø115	103	260	43	12	4x7	50 f7	101.5	3x35	6x60°	9	16	97	15.75



## ***RMH-H2A2 Series Rotating Union*** ***Mixed Fluid High-Speed***

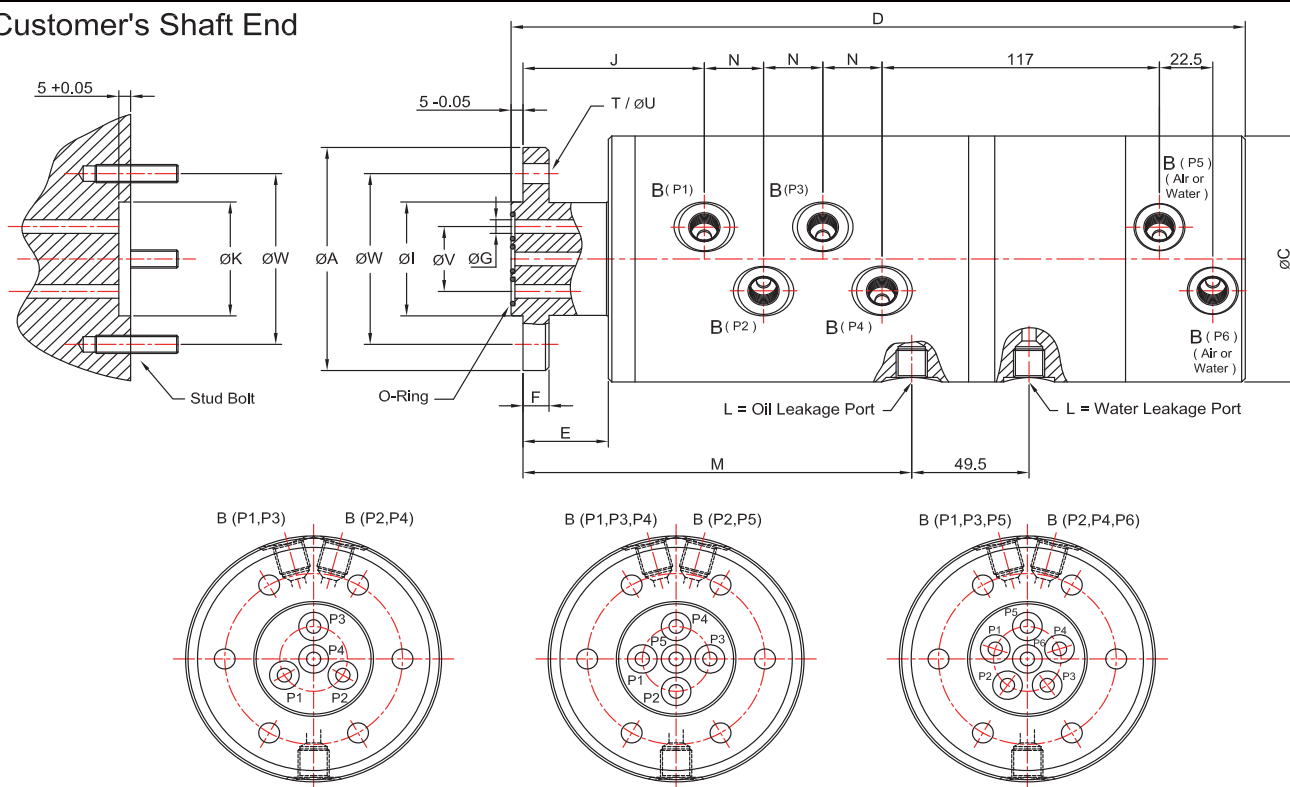
- Hydrostatic bearing design independently.
- Special design of the hydraulic oil and air.
- Vent to control leakage, depends on the pressure shaft secondary seal.
- Different fluid design mainly provides customers of the special application requirements.
- The shell for aluminum alloy is to lose weight.
- Shaft made of alloy steel.
- Special design for high speed.
- If you have technical questions, please inquire the local vendors.

- 靜壓獨立軸承設計。
- 液壓油和空氣的特殊應用設計。
- 排氣孔為了控制洩漏，取決於壓力軸進行二次密封。
- 不同的流體特殊運用設計是主要提供客戶所需。
- 外殼材質為鋁合金在於減輕重量。
- 旋轉軸材質為合金鋼。
- 主要為了高壓高轉速特殊設計運用。
- 如有技術使用上疑問，請洽當地有關經銷商諮詢。

### **Operating Date**

Max. Hydraulic Pressure	2,900 PSI	200 BAR
Min. Hydraulic Pressure	40 PSI	3 BAR
Max. Air Pressure	115 PSI	8 BAR
Maximum Speed	1,500 RPM	1,500 rpm/min <sup>-1</sup>
Max. Temperature	60°C	> 60°C consulting technical personnel

### **Customer's Shaft End**



DN	B	Ordering No:	A Rotor Flange	C ø	D	E	F	G ø	I ø	K ø	J	L	M	N	T	U ø	V ø	W ø	Weight Kg
2 x 8	4 x G1/4	RMH-F098050H2A2	ø98	108	260	36	11	4x6	50 f7	50 H7	76.5	G1/4	114	1x25	6x60°	8.6	28.5	75	3.8
3 x 8	5 x G1/4	RMH-F098050H3A2	ø98	108	285	36	11	5x6	50 f7	50 H7	76.5	G1/4	139	2x25	6x60°	8.6	28.5	75	5.45
4 x 8	6 x G1/4	RMH-F098050H4A2	ø98	108	310	36	11	6x6	50 f7	50 H7	76.5	G1/4	164	3x25	6x60°	8.6	28.5	75	6.25

## A17 Series Bearing less "Closed Seal" Rotary Unions



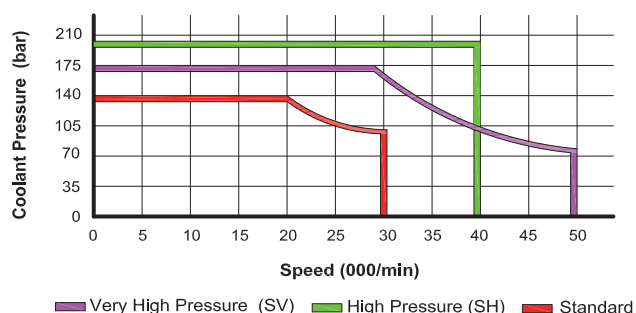
- Single passage for coolant or MQL.
- Closed seals for transfer line and similar applications.
- Full-flow design no obstructions to trap chips or debris.
- Balanced mechanical seals made from tungsten carbide for live even under difficult operating conditions.
- Compact size can be adapted for custom installations.
- Anodized aluminum housing resists corrosion.
- 單通道設計為了可用於冷卻或是 MQL 霧化冷卻。
- 常閉狀態下的機械密封應用。
- 精密平衡機械密封採用碳化鎢可在苛刻環境下運轉。
- 緊湊的設計用戶可自行安裝。
- 外殼經過陽極處理後可耐酸鹼。

### Operating Date

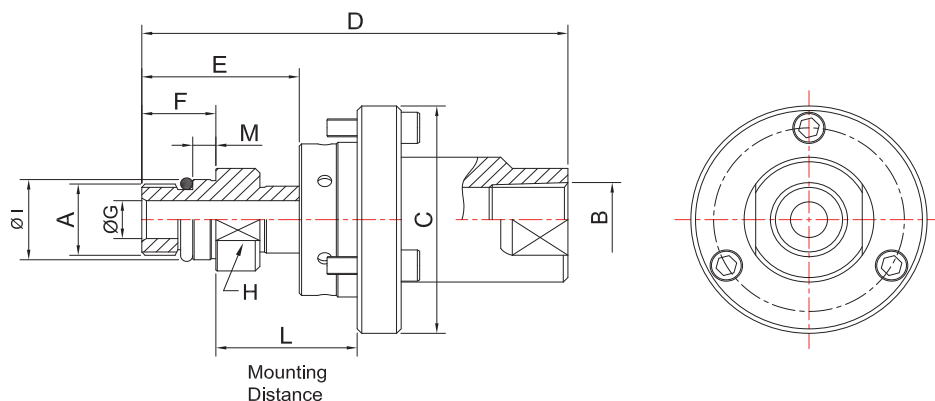
Media	Water-based Coolant MQL (oil mist) up to 10 bar (145 psi)		
Maximum Speed	See table		
Maximum Pressure	See Chart		
Maximum Flow	75 24 2.5	l/min l/min l/min	Standard High Pressure (SH) Very High Pressure (SV)
Maximum Temperature	70°C		



DO NOT RUN DRY



### Axial Connection



		Ordering Number	B Supply Connection	C Overall Diameter	D Overall Length	L Mounting Distance	A Rotor Connection	E Rotor Length	G Bore Diameter	H Across Flats	I Pilot Diameter	M Pilot Length	Max Speed (rpm)
Standard	Axial Connection	A17-6L98G3-0511	G 3/8"	51	92	31.5/30.5	M16xP1.5 LH	34	8.5	21	17.995/17.987	5	30,000
		A17-6L98N3-0011	NPT 3/8"	51	92	31.5/30.5	M16xP1.5 LH	34	8.5	21	17.995/17.987	5	30,000
		A17-5R98N3-0011	NPT 3/8"	51	95	31.5/30.5	5/8-18UNF RH	37	8.5	21	16.650/16.642	5	30,000
		A17-5L98N3-0011	NPT 3/8"	51	95	31.5/30.5	5/8-18UNF LH	37	8.5	21	16.650/16.642	5	30,000
SH		A17-2L53R3-4949	RC 3/8"	54	105	39.5/38.5	M12xP1.25 LH	40	5	18	14.000/13.992	5	50,000
SV		A17-6L52G2-0629	G 1/4"	51	92	31.5/30.5	M16xP1.5 LH	34	5	21	17.995/17.987	5	40,000



## A21 Series Bearing less "On-Off" Rotary Unions

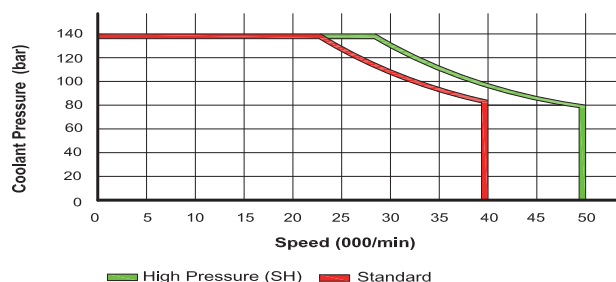
- Single passage for coolant or MQL.
- Good on/off in dry operation, without pressure fluid in a very short 0.2mm distance open and close function can limit the liquid discharge.
- Balanced mechanical seals made from tungsten carbide for live even under difficult operating conditions.
- Compact size can be adapted for custom installations.
- Anodized aluminum housing resists corrosion.
- 單通道設計為了可用於冷卻或是 MQL 霧化冷卻。
- 良好的開 / 閉功能可以在無壓力液體乾轉，在極短的 0.2mm 距離中開閉可限制排泄量。
- 精密平衡機械密封採用碳化鎢材料可在苛刻環境下運轉。
- 緊湊的設計用戶可自行安裝。
- 外殼經過陽極處理後可耐酸鹼。

### Operating Date

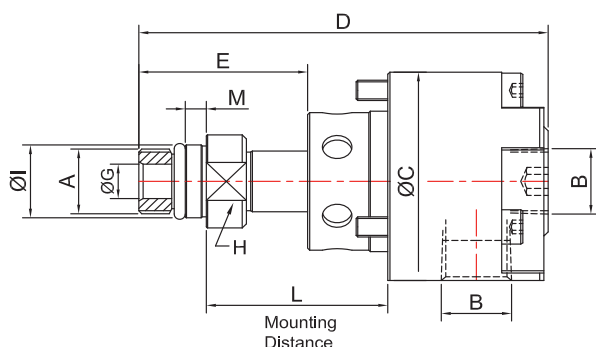
Media	Water-based Coolant MQL (oil mist) up to 10 bar (145 psi)	
Maximum Speed	40,000 min <sup>-1</sup>	40,000 rpm Standard
	50,000 min <sup>-1</sup>	50,000 rpm High Pressure (SH)
Maximum Pressure	140 bar	2,000 psi
Maximum Flow	24 l/min	
B21-2L63R3-3332	32 l/min	
B21-6L9SR3-3334	75 l/min	
Maximum Temperature	70°C	



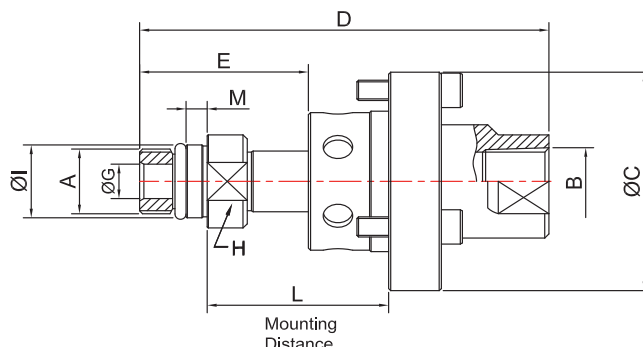
NO AIR PRESSURE  
WITH ROTATION



### Dual Connection



### Axial Connection



		Ordering Number	B Supply Connection	C Overall Diameter	D Overall Length	L Mounting Distance	A Rotor Connection	E Rotor Length	G Bore Diameter	H Across Flats	I Pilot Diameter	M Pilot Length	Max Speed (rpm)
Standard	Dual Connection	B21-2L62R3-3032	RC 3/8"	54	94	39.5/38.5	M12xP1.25 LH	37	6	18	14.000/13.992	5	40,000
		B21-6L94R3-3034	RC 3/8"	54	97	44.0/43.0	M16xP1.5 LH	40	8.5	21	17.995/17.987	5	40,000
		B21-2L63R3-3332	RC 3/8"	54	94	39.5/38.5	M12xP1.25 LH	37	6	18	14.000/13.992	5	40,000
		B21-6L9SR3-3334	RC 3/8"	54	97	44.0/43.0	M16xP1.5 LH	40	8.5	21	17.995/17.987	5	40,000
		B21-2L62G3R2-3832	G3/8"Radial RC1/4"Axial	54	94	39.5/38.5	M12xP1.25 LH	37	6	18	14.000/13.992	5	40,000
		B21-6L94G3R2-3834	G3/8"Radial RC1/4"Axial	54	97	44.0/43.0	M16xP1.5 LH	40	8.5	21	17.995/17.987	5	40,000
SH	Axial	A21-2L62R3-4032	RC 3/8"	54	94	39.5/38.5	M12xP1.25 LH	37	6	18	14.000/13.992	5	40,000
		A21-6L94R3-4034	RC 3/8"	54	97	44.0/43.0	M16xP1.5 LH	40	8.5	21	17.995/17.987	5	40,000
		A21-2L52R3-4149	RC 3/8"	54	105	39.5/38.5	M12xP1.25 LH	40	5	18	14.000/13.992	5	50,000
		A21-6L52R3-4343	RC 3/8"	54	108	44.0/43.0	M16xP1.5 LH	43	5	21	17.995/17.987	5	50,000



## A29 Series Bearing less "On-Off" Rotary Unions



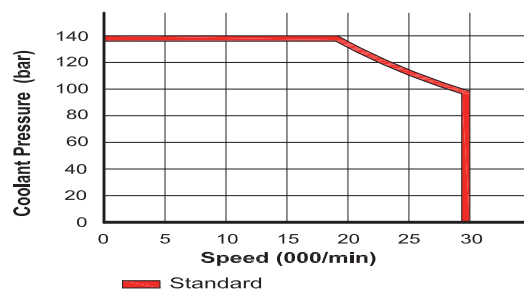
- Single passage for coolant or MQL.
- On / Off function the distance from 0.5-2.0mm, can follow the main shaft to adjust lever change.
- Balanced mechanical seals made from tungsten carbide for live even under difficult operating conditions.
- Compact size can be adapted for custom installations.
- Anodized aluminum housing resists corrosion.
- 單通道設計為了可用於冷卻或是 MQL 霧化冷卻。
- 開 / 閉功能作動距離從 0.5-2.0mm 可以跟隨主軸變化來作調整。
- 精密平衡機械密封採用碳化鎢可在苛刻環境下運轉。
- 緊湊的設計用戶可自行安裝。
- 外殼經過陽極處理後可耐酸鹼。

### Operating Date

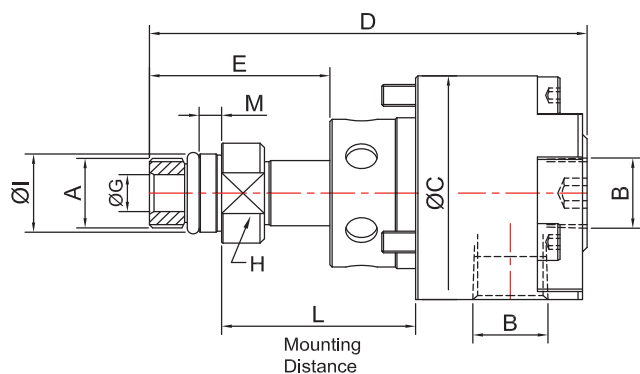
Media	Water-based Coolant MQL (oil mist) up to 10 bar (145 psi)	
Maximum Speed	30,000 min <sup>-1</sup>	30,000 rpm Standard
Maximum Pressure	140 bar	2,000 psi
Maximum Flow Standard A29-6L96R3-0130	24 l/min 48 l/min	
Maximum Temperature	70°C	



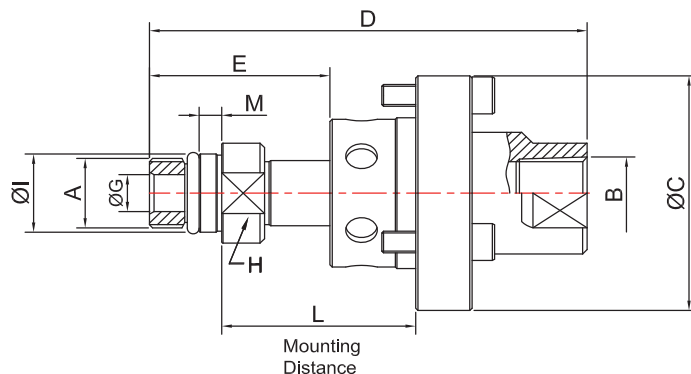
NO AIR PRESSURE  
WITH ROTATION



### Dual Connection



### Axial Connection



		Ordering Number	B Supply Connection	C Overall Diameter	D Overall Length	L Mounting Distance	A Rotor Connection	E Rotor Length	G Bore Diameter	H Across Flats	I Pilot Diameter	M Pilot Length	Max Speed (rpm)
Standard	Dual Connection	B29-6L94R3-0330	RC 3/8"	54	97	44.0/43.0	M16xP1.5 LH	40	8.5	21	17.995/17.987	5	30,000
		B29-2L62R3-0332	RC 3/8"	54	94	39.5/38.5	M12xP1.25 LH	37	6	18	14.000/13.992	5	30,000
		B29-6L94G3-0530	G 3/8"	54	97	44.0/43.0	M16xP1.5 LH	40	8.5	21	17.995/17.987	5	30,000
		B29-2L52G3-8573	G 3/8"	54	94	39.5/38.5	M12xP1.25 LH	37	5	18	14.000/13.992	5	30,000
	Axial Connection	A29-6L96R3-0130	RC 3/8"	54	97	44.0/43.0	M16xP1.5 LH	40	8.5	21	17.995/17.987	5	30,000
		A29-6L94R3-0330	RC 3/8"	54	97	44.0/43.0	M16xP1.5 LH	40	8.5	21	17.995/17.987	5	30,000
		A29-2L62R3-0332	RC 3/8"	54	94	39.5/38.5	M12xP1.25 LH	37	6	18	14.000/13.992	5	30,000
		A29-2L52G3-7373	G 3/8"	54	94	39.5/38.5	M12xP1.25 LH	37	5	18	14.000/13.992	5	30,000
		A29-4L62G3-9292	G 3/8"	54	94	39.5/38.5	M14xP1.5 LH	37	6	18	14.495/14.487	5	30,000

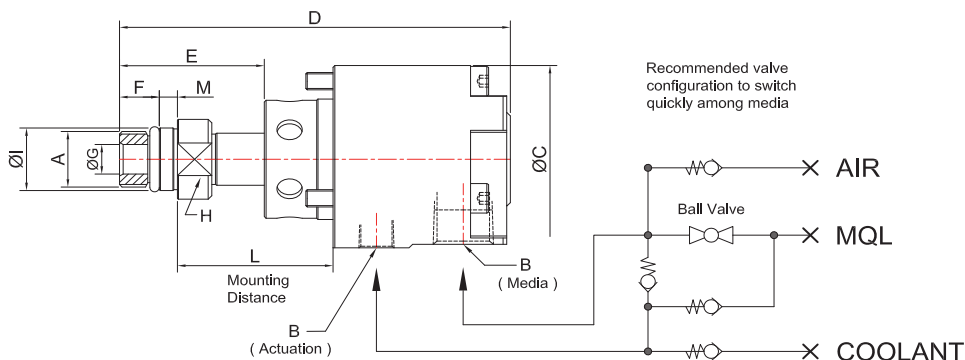
## A39 Series Bearing less "All-Media"

### "On-Off" Rotary Unions for Coolant, MQL, Air Series

- Single passage for coolant or MQL and Air.
- ON / OFF function the distance from 0.5-2.0mm, can follow the main shaft to adjust lever change.
- ON / OFF when no input pressure, axial when there are small gaps can be used in dry air pressure control leakage.
- Balanced mechanical seals made from tungsten carbide for live even under difficult operating conditions.
- Compact size can be adapted for custom installations.
- Anodized aluminum housing resists corrosion.
- 單通道設計為了可用於冷卻或是 MQL 霧化冷卻以及壓縮空氣。
- 開 / 閉功能作動距離從 0.5-2.0mm 可以跟隨主軸改變作調整。
- 開 / 閉功能當無壓力輸入時，在軸向尚有微小空隙時可使用乾燥壓縮空氣來控制洩漏量。
- 精密平衡機械密封採用碳化鎢可在苛刻環境下運轉。
- 緊湊的設計用戶可自行安裝。
- 外殼經過陽極處理後可耐酸鹼。

## Operating Date

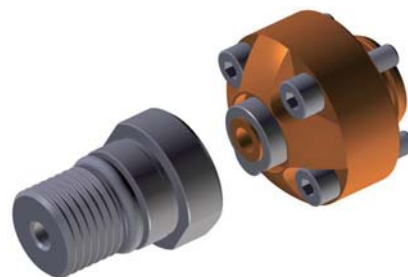
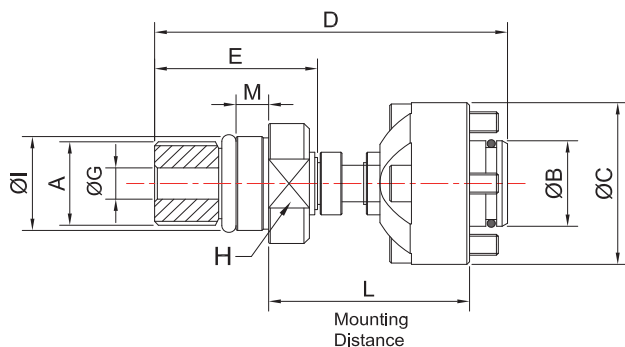
Media	Water-based Coolant MQL (oil mist) up to 10 bar (145 psi) Air, dry lubricated		
Maximum Speed	30,000 min <sup>-1</sup>	30,000 rpm	
Maximum Pressure	140 bar 10 bar	2,000 psi 145 psi	Coolant MQL, Air
Maximum Flow Standard	24 l/min 32 l/min		
	A39-6L93R3-0330 A39-6L93G3-7430		
Maximum Temperature	70°C		



## A54 Series Bearing less "Autosense"

### "Long Stroke" Rotary Unions For Coolant, MQL, Air Series

- Single passage for coolant or MQL.
- New Autosense technology can be automatically closed and control the change of leakage between operation in response to any media.
- Non-rotating one of the elements of the axial stroke has 8 mm distance. When using rotary unions clamping device can do traction movement.
- Balanced mechanical seals made from tungsten carbide for live even under difficult operating conditions.
- Compact size can be adapted for custom installations.
- Anodized aluminum housing resists corrosion.
- 單通道設計為了可用於冷卻或是 MQL 霧化冷卻。
- 新的 Auto Sense 技術可以自動關閉和控制洩漏間隙更改操作回應任何流體介質。
- 當設備不運作時軸向行程 8mm 的距離，在使用旋轉接頭做夾緊的同時，可以跟隨設備做牽引和跟隨動作。
- 精密平衡機械密封採用碳化鎢可在苛刻環境下可運轉。
- 緊湊設計用戶可自行安裝。
- 外殼經過陽極處理後可耐酸鹼。





***High-Speed rotaring unions series***  
***For more tranferring media fluid and air or vacuum***

***FU YANG MACHINERY CO.,LTD.***

***P.O. BOX 17-146 Taichung***

***Taichung City 40299 Taiwan (R.O.C)***

***TEL: +886 4 24067487    FAX: +886 4 24181109***